

GOVERNMENT OF INDIA
DEPARTMENT OF ARCHAEOLOGY
**CENTRAL ARCHAEOLOGICAL
LIBRARY**

Acc. No. **30519**

CALL NO. R 910-3095451G | M.D.G. | Kis



AGENTS FOR THE SALE OF MADRAS GOVERNMENT PUBLICATIONS.

IN INDIA.

- A. C. BARREAU & Co. (Late A. J. COMBRIDGE & Co.), Madras.
R. CAMBRAY & Co., Calcutta.
E. M. GOPALAKRISHNA KONE, Podumantapam, Madura.
HIGGINBOTHAMS (Ltd.), Mount Road, Madras.
V. KALYANARAMA IYER & Co., Esplanade, Madras.
G. C. LOGANADHAM BROTHERS, Madras.
S. MURTHY & Co., Madras.
G. A. NATESAN & Co., Madras.
The Superintendent, NASSIR KANUN HIND PRESS, Allahabad.
P. R. RAMA IYAR & Co., Madras.
D. B. TARAPORNVALA SONS & Co., Bombay.
TRACKER & Co. (Ltd.), Bombay.
TRACKER, SPINK & Co., Calcutta.
S. VAS & Co., Madras.

IN ENGLAND.

- B. H. BLACKWELL, 50 and 51, Broad Street, Oxford.
CONSTABLE & Co., 10, Orange Street, Leicester Square, London, W.C.
DIGHTON, BELL & Co. (Ltd.), Cambridge.
T. FISHER UNWIN (Ltd.), 1, Adelphi Terrace, London, W.C.
GRINDLAY & Co., 54, Parliament Street, London, S.W.
KEGAN PAUL, TRENCH, TRUBNER & Co. (Ltd.), 68-74, Carter Lane, London, E.C.
and 25, Museum Street, London, W.C.
HENRY S. KING & Co., 65, Cornhill, London, E.C.
P. S. KING & SON, 2 and 4, Great Smith Street, Westminster, London, S.W.
LUCAS & Co., 46, Great Russell Street, London, W.C.
B. QUARITCH, 11, Grafton Street, New Bond Street, London, W.
W. TRACKER & Co., 2, Creed Lane, London, E.C.

ON THE CONTINENT.

- ERNEST LEROUX, 28, Rue Bonaparte, Paris.
MARTINUS NIJHOFF, The Hague, Holland.

D 8725



MADRAS DISTRICT GAZETTEERS.

KISTNA.

VOLUME II.



PRICE, 1 rupee.

[1 shilling 6 pence.

MADRAS DISTRICT GAZETTEERS.

STATISTICAL APPENDIX

~~A-N~~
~~7219~~

FOR

KISTNA DISTRICT.

30519



R 910.3095451G
M.D.G./Kis



MADRAS:
PRINTED BY THE SUPERINTENDENT, GOVERNMENT PRESS,

1916.

**CENTRAL ARCHAEOLOGICAL
LIBRARY**

Acc. No. 30519

Date... 7.3.57

Call No. R 910.3095451G

M.D.G / Kis

TABLE OF CONTENTS.

TABLE	PAGE
I. Area, Population, etc., in 1911	1
II. Variation in Population since 1891	2
III. Roads	2
IV. List of Travellers' Bungalows	3
V. Religions in 1911	11
VI. Vital Statistics	12
VII. Causes of Death	14
VIII. Castes, Tribes and Races in 1911	15
IX. Classification of Area and Principal Crops in Fasli 1322 (1912-13)	17
X. Reserved Forest and Area proposed for reservation on 30th June 1913	20
XI. Classification of Area and Money rates according to the last settlement—	
Part 1. Area under each money rate	21
" 2. Classes and sorts included under each money rate	24
XII. Rainfall	29
XIII. Holdings, Cultivation and Demand in Fasli 1322 (1912-13)	31
XIV. Revenue payable by permanently-settled estates in Fasli 1322 (1912-13)	32
XV. Demand, Collection and Balance of Current Land Revenue and Cesses	37
XVI. Remissions	38
XVII. Land Improvement and Agriculturists' Loans	40
XVIII. Prices in seers per rupee	41
XIX. Income-tax (Part IV. "Other sources" only).	46
XX. Abkari and Opium	50
XXI. Revenue Receipts	51
XXII. Sea-borne Trade—Total Trade in each port	52
XXII-A. Sea-borne Trade—Chief Imports and Exports in selected ports	53
XXIII. Income and Expenditure of Local Boards in 1912-13	54
XXIV. Income and Expenditure of Municipalities in 1912-13	56
XXV. Education in 1911	58
XXVI. Schools and Scholars on the 31st March 1913... ..	59
XXVII. Expenditure on Schools in 1912-13	60
XXVIII. Hospitals and Dispensaries in 1912	61
XXIX. Vaccination	62
XXX. Civil Justice	63
XXXI. Criminal Justice	64
XXXII. Work of Criminal Courts	65
XXXIII. Police and Jails in 1912	66

TABLE OF CONTENTS

Introduction	1
Chapter I. The History of the United States	15
Chapter II. The Constitution of the United States	35
Chapter III. The Federal Government	55
Chapter IV. The State Governments	75
Chapter V. The Local Governments	95
Chapter VI. The Judiciary	115
Chapter VII. The Executive	135
Chapter VIII. The Legislative	155
Chapter IX. The Administration	175
Chapter X. The Finance	195
Chapter XI. The Education	215
Chapter XII. The Religion	235
Chapter XIII. The Social	255
Chapter XIV. The Literature	275
Chapter XV. The Art	295
Chapter XVI. The Science	315
Chapter XVII. The Industry	335
Chapter XVIII. The Commerce	355
Chapter XIX. The Transportation	375
Chapter XX. The Communication	395
Chapter XXI. The Defense	415
Chapter XXII. The Foreign Relations	435
Chapter XXIII. The International Law	455
Chapter XXIV. The International Trade	475
Chapter XXV. The International Relations	495
Chapter XXVI. The International Law	515
Chapter XXVII. The International Trade	535
Chapter XXVIII. The International Relations	555
Chapter XXIX. The International Law	575
Chapter XXX. The International Trade	595
Chapter XXXI. The International Relations	615
Chapter XXXII. The International Law	635
Chapter XXXIII. The International Trade	655
Chapter XXXIV. The International Relations	675
Chapter XXXV. The International Law	695
Chapter XXXVI. The International Trade	715
Chapter XXXVII. The International Relations	735
Chapter XXXVIII. The International Law	755
Chapter XXXIX. The International Trade	775
Chapter XL. The International Relations	795
Chapter XLI. The International Law	815
Chapter XLII. The International Trade	835
Chapter XLIII. The International Relations	855
Chapter XLIV. The International Law	875
Chapter XLV. The International Trade	895
Chapter XLVI. The International Relations	915
Chapter XLVII. The International Law	935
Chapter XLVIII. The International Trade	955
Chapter XLIX. The International Relations	975
Chapter L. The International Law	995

I.—Area, Population, etc., in 1911.

Locality.	(1)	(2)	Number of			Population, 1911.			Population (both sexes) in 1901.	Percentage of variation (of population).		Density of population per square mile, 1911.	
			(3)	(4)	(5)	(6)	(7)	(8)		(9)	1891—		1901—
											Towns.		Villages.
NARASAPUR DIVISION.													
Narasapur	262	3	78	80,604	171,124	81,149	89,975	151,342	+ 13.2	+ 13.1	653	
Bhimavaram	347	...	135	20,548	106,533	80,741	85,792	144,015	+ 17.5	+ 15.2	480	
Tannuku	372	3	163	48,059	269,858	130,941	138,917	238,758	+ 17.0	+ 13.0	725	
BEZWADA DIVISION.													
Beswada	422	2	107	26,135	147,323	75,243	72,060	124,170	+ 16.6	+ 18.6	349	
Nandigama	677	1	166	27,980	158,186	79,616	78,570	139,958	+ 10.5	+ 13.0	234	
Nuzvid	676	1	169	29,314	162,166	82,434	79,732	140,817	+ 21.2	+ 15.2	240	
Tiravur	337	...	90	14,417	79,175	40,827	38,348	69,219	+ 13.3	+ 14.4	235	
GUDIVADA DIVISION.													
Gudivada	313	1	173	30,060	162,306	81,296	81,010	142,055	+ 28.8	+ 14.3	519	
Kaikalur	394	...	98	12,361	64,500	32,745	31,755	56,813	+ 27.2	+ 13.5	164	
ELLORE DIVISION.													
Ellore	766	1	212	38,620	208,167	104,406	103,761	182,027	+ 5.6	+ 14.3	272	
Yernagudem	601	...	117	28,213	158,650	80,854	78,296	140,048	+ 8.6	+ 13.3	264	
MASULIPATAM DIVISION.													
Bandar	281	1	106	21,406	115,509	57,433	58,026	102,761	+ 7.5	+ 12.4	411	
Divi	459	...	88	24,140	134,008	67,696	66,312	111,565	+ 8.5	+ 20.2	262	
District Total	...	5,907	13	1,702	890,837	1,997,535	994,961	1,002,574	1,744,138	+ 14.3	+ 14.5	838	

II.—Variation in Population since 1891.

TOWNS.	Population.			Percentage of variation of population.	
	1911.	1901.	1891.	1891-1901.	1901-1911.
(1)	(2)	(3)	(4)	(5)	(6)
The whole district.	1,997,535	1,744,138	1,526,038	14·3	14·5
NARASAPUR TALUK.					
Palakollu	12,953	10,848	8,657	25·3	19·4
Narasapur	11,950	10,279	7,464	37·7	16·2
Achanta	8,844	8,382	7,047	18·9	5·5
TANUKU TALUK.					
Attili	17,954	16,034	14,486	11·1	11·6
Perungonda	11,039	9,985	8,128	22·8	10·6
Tanuku	18,885	15,036	13,720	9·6	25·3
BEZWADA TALUK.					
Bezwada *	32,867	24,224	20,741	16·8	35·7
Vallura	7,181	6,180	5,047	22·4	16·2
NANDIGAMA TALUK.					
Jagayyapeta	8,802	8,432	9,717	— 13·2	4·3
NURVID TALUK.					
Nurvid	10,023	9,015	7,637	18·0	11·2
GUDIVADA TALUK.					
Gudivada	9,180	6,719	4,732	42·0	36·6
ELLORE TALUK.					
Ellore *	37,819	33,521	29,382	14·1	12·8
BANDAR TALUK.					
Masulipatam *	42,123	39,507	38,809	1·8	6·6

* Represents a Municipal town.

III.—Roads.

Year.	Mileage of roads maintained.		
	Total.	Metalled.	Unmetalled.
(1)	(2)	(3)	(4)
1906-07	971	612	359
1911-12	1,096	696	400

NOTE.—The territorial limits of the district were revised in October 1904.

List of ...

No.	Name	Rank	Regiment	Notes
1
2
3
4
5
6
7
8
9
10
11
12
13
14
15
16
17
18
19
20

...

IV.—List of Travellers' Bungalows.

Serial number.	Taluks and stations.	By whom maintained.	Nearest railway station, if any, and the distance from it.	Nature of accommodation.
(1)	(2)	(3)	(4)	(5)
NABASAPUR DIVISION.				
<i>Narasapur Taluk.</i>				
1	Koderu	P.W.D.	Nidadavolu, 22 miles.	Tiled and thatched. Two rooms and two bath rooms. Furnished.
2	Doddipatla (rest-house).	L.F.D.	Nidadavolu, 37 miles.	Thatched. One room, one bath room in ruined state. No furniture.
3	Kalipatnam (rest-house).	Do.	Chilakalpudi, 23 miles.	Do.
4	Narsapur	Do.	Nidadavolu, 35 miles.	Two main rooms, two bath rooms, stables and kitchen. Well furnished.
<i>Bhimavaram Taluk.</i>				
5	Viravasaram (rest-house).	L.F.D.	Tadepalligudem, 26 miles, via Penu-mantra and Attili.	Thatched. One large room, one small room and one bath room. Little furniture (one table, two chairs and a commode).
6	Undi (rest-house) ...	Do.	Tadepalligudem, 21 miles.	One main room, one side room and two bath rooms. Little furniture (one table, two chairs and a commode).
7	Bhimavaram (rest-house).	Do.	Tadepalligudem, 25 miles.	Local Fund store shed. One small room and one small bath room. Furnished with one small table and a chair.
8	Ganapavaram (rest-house).	Do.	Tadepalligudem, 14 miles.	One room, two bath rooms with verandah in front and sides. Well furnished.
9	Bhimavaram ...	P.W.D.	Tadepalligudem, 26 miles.	One main hall and two side-rooms and two bath rooms. Furniture same as that of Peravali of Tanuku taluk.
10	Akuvudu	Do.	Do.	Do.
<i>Tanuku Taluk.</i>				
11	Nidadavolu ...	P.W.D.	Nidadavolu, 1½ miles.	Thatched. Two rooms and two bath rooms. Furnished.

N.B.—(1) Rest-house of Nidadavolu is within the Chettipeta village limits.

(2) Charges per diem at the above places: As. 8 for a single man and As. 12 for a married couple or family.

IV.—List of Travellers' Bungalows—cont.

Serial number.	Taluks and stations.	By whom maintained.	Nearest railway station, if any, and the distance from it.	Nature of accommodation.
(1)	(2)	(3)	(4)	(5)
NARASAPUR DIVISION —cont.				
Tanuku Taluk—cont.				
12	Chettipeta	P.W.D.	Nidadavolu, 1½ miles.	Tiled. Two drawing rooms, two bath rooms and two store rooms. Two dressing tables, two writing tables, two bug proof chairs, two zinc tubs, two wash stands, two sanitary commodes.
13	Peravali	Do.	Nidadavolu, 12 miles.	Tiled and thatched. Two side rooms, two corner rooms, one bath room and drawing room. Furnished with one writing table, one long-arm chair, two bug proof chairs, one dining table, one wash stand, one zinc tub, one sanitary commode.
14	Attili	P.W.D.	Nawabpalem by canal, vid Chettipeta 20 miles, or Tadepalligudem, 12 miles.	One main hall, two side rooms and two bath rooms. Furniture same as in Peravali.
15	Neggipudi *.. ..	L.F.D.	Nidadavolu, 22 miles.	Two rooms, two bath rooms and front verandah, stables. Furnished with tables and chairs.
16	Tanuku	Do.	Tadepalligudem, 12 miles.	One main room, one side room, one rear room, one back room, front and east side verandah. Stable and kitchen. Furnished with tables and chairs.
17	Penumantra (rest-house).	Do.	Tadepalligudem, 18 miles.	One large room with bath room and one side room with bath room, one cook room. Furnished with chairs and tables.
BEZWADA DIVISION.				
Bescada Taluk.				
18	Kondapalli	L.F.D.	Kondapalli, within ½ mile.	Three main rooms and two bath rooms, one kitchen and stables for four horses. Well furnished.

* Charges per diem Rs. 4 for a single man and Rs. 8 for a married couple or family.
Charges per diem at other places: Rs. 5 for a single man and Rs. 12 for a married couple or family.

IV.—List of Travellers' Bungalows—*cont.*

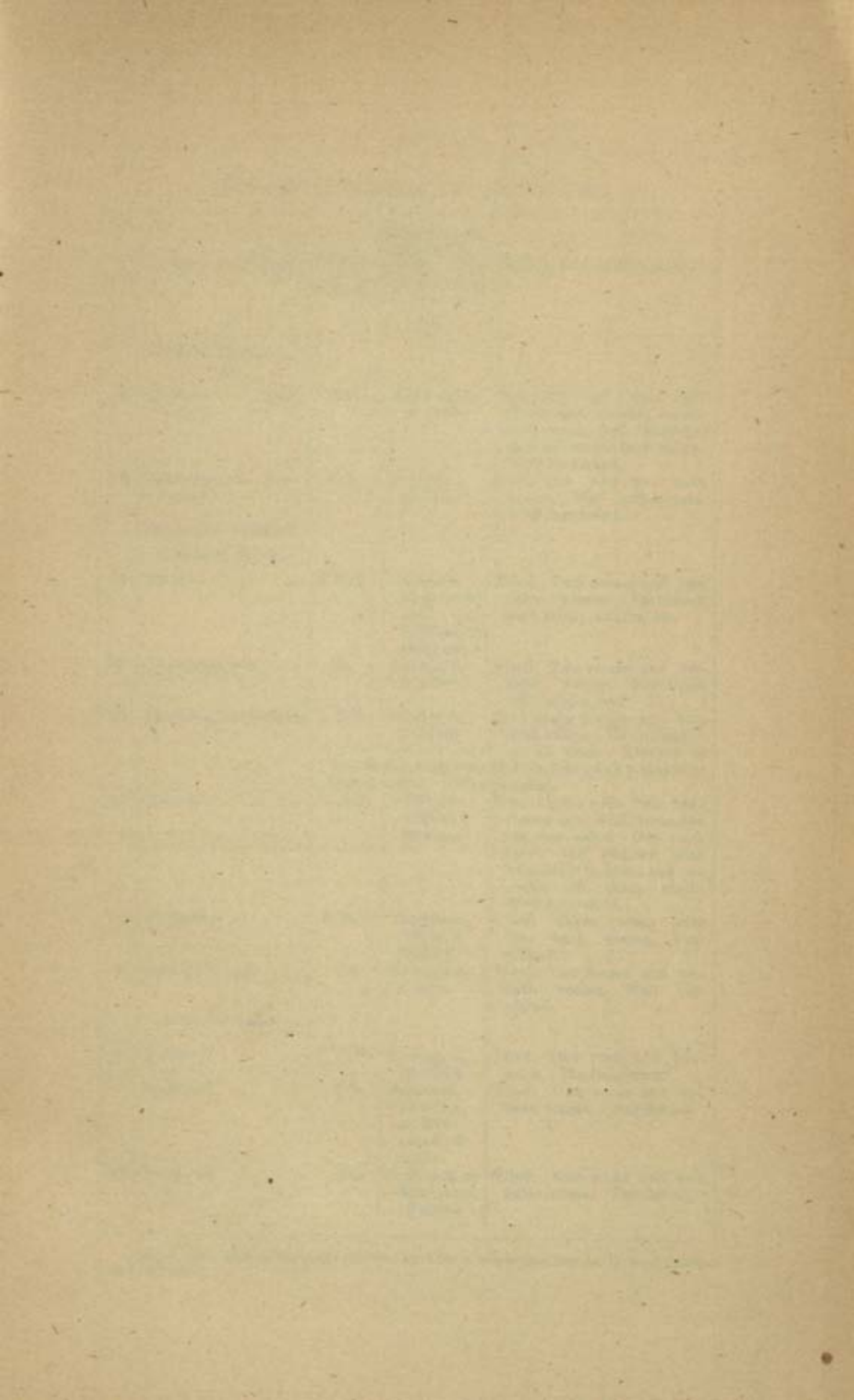
Serial number.	Taluks and stations.	By whom maintained.	Nearest railway station, if any, and the distance from it.	Nature of accommodation.
(1)	(2)	(3)	(4)	(5)
	BEZWADA DIVISION— <i>cont.</i> <i>Bezwada Taluk—cont.</i>			
19	Kankipadu	L.F.D.	Uppuluru, 4½ miles and Gannavararam, 8 miles.	Two main halls, two bath rooms, two verandah rooms with three kitchens and stables for four horses. Well furnished.
20	Mailavaram	Do.	Kondapalli, 12 miles.	One hall and two bath rooms, two kitchens and stables for two horses. Well furnished.
21	Kondapalli Hill	F.D.	Kondapalli, 5 furlongs.	Tiled. One room and one bath room. One table and two chairs.
22	Bezwada *	Municipality.	Bezwada, 2 furlongs.	Terraced. Four rooms and four bath rooms. Fully furnished.
23	Do.	P.W.D.	Bezwada, 1 mile, 3 furlongs.	Tiled. Two rooms and two bath rooms. Not furnished.
24	Do.	Do.	Do.	Thatched. One room and one bath room. Not furnished.
25	Valluru Nandigama Taluk.	Do.	Bezwada, 20 miles.	Tiled. Two rooms and bath rooms.
26	Kanchikacherla	L.F.D.	Kondapalli, 15 miles.	Two main rooms, two rear verandah rooms and two bath rooms with kitchens and stables for four horses. Well furnished.
27	Nandigama	Do.	Madira, 10 miles.	Do.
28	Lingala (rest-house).	Do.	Bonakallu, 6 miles.	One room and two bath rooms, kitchen and stables for three horses. Well furnished.
29	Jaggayyapeta	Do.	Bonakallu, 16 miles.	Two main rooms and two bath rooms with kitchen and stables for two horses. Well furnished.
30	Munagala	Do.	Kammammett, 3½ miles.	Two main rooms, two rear verandah rooms, two bath rooms with kitchen and stables for four horses. Well furnished.

* Charges per diem Re. 1 for a single man and Re. 1-8-0 for a married couple or family.
Charges per diem at other places: As. 8 for a single man and As. 12 for a married couple or family.

IV.—List of Travellers' Bungalows—*cont.*

Serial number.	Taluk and stations.	By whom maintained.	Nearest railway station, if any, and the distance from it.	Nature of accommodation.
(1)	(2)	(3)	(4)	(5)
	BEZWADA DIVISION— <i>cont.</i>			
	Nandigama Taluk— <i>cont.</i>			
31	Gavaravaram (rest-house).	L.F.D.	Madira, 18 miles.	One main room, two bath rooms. No out-houses. Well furnished.
32	Kommarabanda ...	Do.	Kammammett, 26 miles.	Two main rooms, two rear verandah rooms, two bath rooms with kitchen and stables for four horses. Well furnished.
33	Sheru Mahammadupet.	Do.	Bonakallu, 18 miles.	Do.
34	Polampalli	P.W.D.	Bonakallu, 6 miles.	Thatched. Two rooms and one bath room. Not furnished with tables, etc.
35	Muchchintala ...	Do.	Madira, 8 miles.	Tiled. One room and two bath rooms. Not furnished with tables, etc.
36	Gummadidurru ...	Do.	Madira, 6 miles.	Do.
	Nuzvid Taluk.			
37	Vuyyuru	L.F.D.	Uppuluru, 11½ miles.	Three main rooms and three bath rooms with two kitchens and stables for two horses. Well furnished.
38	Gannavaram ...	Do.	Gannavaram, 1½ miles.	Two main rooms and two bath rooms with two kitchens and stables for two horses. Well furnished.
39	Nuzvid	Do.	Nuzvid, 13 miles.	Two rooms and two bath rooms with two kitchens and stables for three horses. Well furnished.
40	Perikedu	P.W.D.	Nuzvid, 2 miles, 5 furlongs.	Tiled. Two rooms and two bath rooms. Furnished with tables, etc.
	TIRUVUR DIVISION.			
41	Tiruvura	L.F.D.	Madira, 23 miles.	One hall and two bath rooms with two kitchens and stables for two horses. Well furnished.

Charges per diem at the above places : As. 8 for a single man and As. 12 for a married couple or family.



IV.—List of Travellers' Bungalows—cont.

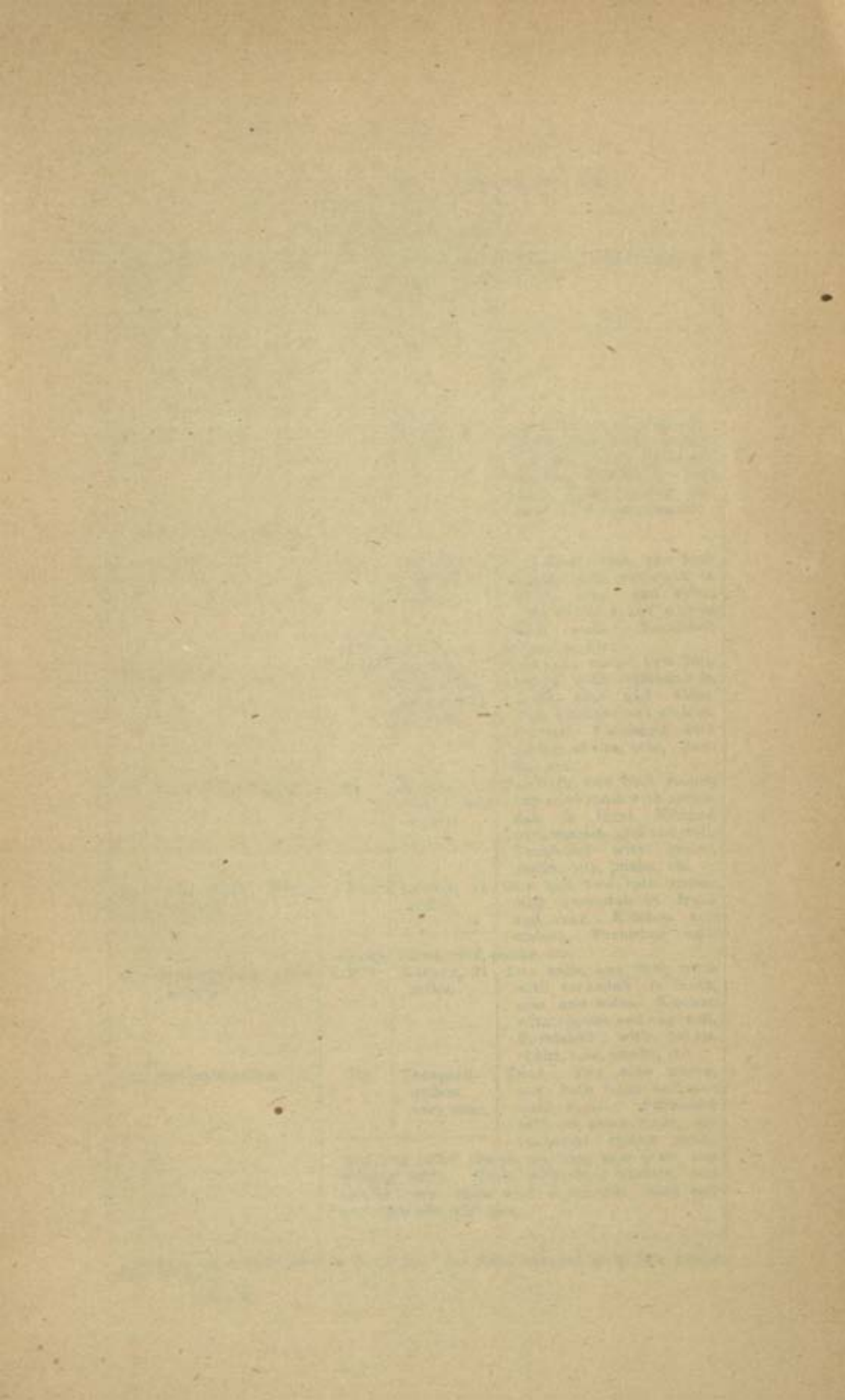
Serial number.	Taluks and stations.	By whom maintained.	Nearest railway station, if any, and the distance from it.	Nature of accommodation.
(1)	(2)	(3)	(4)	(5)
	TIRUVUR DIVISION— cont.			
42	Konduru (rest-house).	L.F.D.	Kondapalli, 27 miles.	One hall and two bath rooms and one side verandah room, two kitchens and stables for four horses. Well furnished.
43	Vissannapeta (rest-house).	Do.	Nezvid, 26 miles.	One hall and two bath rooms. No out-houses. Well furnished.
	GUDIVADA DIVISION. Gudivada Taluk.			
44	Viraaki	P.W.D.	Gudivada, 15 miles by road and 12 miles by short cut.	Tiled. Two rooms and two bath rooms. Furnished with tables, chairs, etc.
45	Ventrepragada ...	Do.	Indupalli, 3 miles.	Tiled. Two rooms and two bath rooms. Furnished with tables, etc.
46	Pamarru (rest-house).	L.F.D.	Gudivada, 9 miles.	Two main rooms and two bath rooms with verandah on all sides. Kitchen of
47	Gudivada	L.F.D.	Gudivada, within 2 furlongs.	two rooms with verandah in front and a stable of three stalls. Well furnished.
48	Gudivada	P.W.D.	Gudivada, within 1 furlong.	Tiled. Three rooms with two bath rooms. Furnished.
49	Kautaram	Do.	Kautaram, 1 mile.	Tiled. Two rooms and two bath rooms. Well furnished.
	Kaikalur Taluk.			
50	Kalidindi	P.W.D.	Kautaram, 20 miles.	Tiled. One room and bath room. No furniture.
51	Vadavalli	Do.	Gudivada, 10 miles, or Kautaram, 5 miles.	Tiled. One room and two bath rooms. Furnished.
52	Vinjaram	Do.	Gudivada or Kautaram, 16 miles.	Tiled. One room and two bath rooms. Furnished.

Charges per diem at the above places : As. 8 for a single man and As. 12 for a married couple or family.

IV.—List of Travellers' Bungalows—*cont.*

Serial number.	Taluks and stations.	By whom maintained.	Nearest railway station, if any, and the distance from it.	Nature of accommodation.
(1)	(2)	(3)	(4)	(5)
	GUDIVADA DIVISION — <i>cont.</i> Kaikalur Taluk— <i>cont.</i>			
53	Tadinada	P.W.D.	Ellore, 24 miles.	Tiled. Two rooms and two bath rooms. Furnished.
54	Kaikalur	L.F.D.	Ellore, 13 miles. Gudivada, 21 miles.	Tiled. Two main rooms, two bath rooms front and rear verandahs, kitchen containing two rooms and one stable of three stalls and one well of 4½' diameter (fresh water). Well furnished.
	ELLORR DIVISION. Ellore Taluk.			
55	Bhimadola	L.F.D.	Bhimadola, 7 furlongs.	Two main rooms, three bath rooms with verandahs in front and sides. Two kitchens and a well. Furnished with table and chairs.
56	Dharmajigudem (rest-house).	Do.	Ellore, 16 miles.	Two main rooms, two bath rooms with verandahs in front, rear and sides, kitchen and stables. Furnished with cots, tables and chairs and bath room requirements.
57	Tadikalapudi (rest-house).	Do.	Ellore, 13 miles.	Two main rooms, two bath rooms, one kitchen and well. Temporary stables. Full requirements supplied.
58	Munduru (rest-house).	Do.	Ellore, 8 miles.	One main room, one bath room, one store room and verandah in front and rear, kitchen and stables. Furnished with one stool, one table and punka, bath room requirements.
59	Kamavarapukota (rest-house).	Do.	Ellore, 22 miles.	One hall, one bath room, one store room with verandah in front and rear. Kitchen and stables with well. Furnished with one stool, one table and punka, bath room requirements.

Charges per diem at the above places : As. 8 for a single man and As. 12 for a married couple or family.



IV.—List of Travellers' Bungalows—*cont.*

Serial number.	Taluks and stations.	By whom maintained.	Nearest railway station, if any, and the distance from it.	Nature of accommodation.
(1)	(2)	(3)	(4)	(5)
	ELLORE DIVISION — <i>cont.</i> Ellore Taluk— <i>cont.</i>			
60	Chintalapudi ...	L.F.D.	Ellore, 30 miles.	Three main rooms and two bath rooms with verandah in front, kitchen, room and stables. Furnished with cots, tables, chairs and bath room requirements.
	Yernagudem Taluk.			
61	Nallajerla ...	Do	Tadepalligudem, 13 miles.	Two main rooms, two bath rooms with verandah in front, rear and sides. Two kitchens and stables with well. Furnished
62	Pangidi ...	L.F.D.	Kovvur, 5½ miles. Nidadavole, 9 miles.	with tables, chairs, cots, punkas, etc. Two main rooms, two bath rooms with verandah in front, rear and sides. Two kitchens and stables. No well. Furnished with tables, chairs, cots, punkas, etc.
63	Kovvur (rest-house).	Do.	Kovvur, within half a mile.	Two halls, two bath rooms, one store room with verandah in front. Kitchen with stables and one well. Furnished with tables, chairs, cots, punkas, etc.
64	Prakkilanka (rest-house).	Do.	Kovvur, 11 miles.	One hall, two bath rooms with verandah in front and rear. Kitchen and stables. Furnished with
65	Gopalapuram (rest-house).	L.F.D.	Kovvur, 21 miles.	chairs, tables, cots, punkas, etc. Two halls, one bath room with verandah in front, rear and sides. Kitchen with stables and one well. Furnished with tables, chairs, cots, punkas, etc.
66	Tadepalligudem ...	Do.	Tadepalligudem, very near.	Tiled. Two side rooms, one bath room and one main room. Furnished with one camp table, one teakwood dining table, two bug proof chairs, one long arm chair, one writing table. Three galvanised buckets, one zinc tub, one tripod wash stand with basin and one commode with pan.

Charges per diem at the above places: As. 8 for a single man and As. 12 for a married couple or family.

IV.—List of Travellers' Bungalows—cont.

Serial number.	Taluks and stations.	By whom maintained.	Nearest railway station, if any, and the distance from it.	Nature of accommodation.
(1)	(2)	(3)	(4)	(5)
	MASULIPATAM DIVISION.			
	<i>Bandar Taluk.</i>			
67	Masulipatam * ...	Municipality.	Masulipatam, 3 furlongs.	The building is a tiled one containing two rooms, two bath rooms and two store rooms. It is well furnished with table, chairs, etc. Compound contains two out-houses.
68	Lakshnipuram ...	P.W.D.	Kavataram, 28 miles.	Tiled. One room and two bath rooms. Only tables and chairs.
	<i>Divi Taluk.</i>			
69	Nidumolu ...	L.F.D.	Masulipatam, 10 miles.	Tiled. Two rooms and two bath rooms, one verandah all round. One kitchen containing three rooms and verandah in front. One horse stable of three stalls and two latrines. Well furnished with chairs, tables, etc.
70	Nidumolu Challapalli. lock	Do.	Masulipatam, 16 miles and 2 furlongs.	One main room and two bath rooms and verandah on three sides. One cook house, single room and one stable of two stalls. Well furnished.
71	Sreekakulam ...	P.W.D.	Masulipatam, 23 miles.	Tiled, one room, two bath rooms. Furnished with table, chair and cot.
72	Avanigadda ...	Do.	Masulipatam, 23 miles.	Flat and pan tiled. One main room and two bath rooms. Tables and chairs only.
73	Koduru ...	Do.	Masulipatam, 14 miles.	Thatched. Two rooms and two bath rooms.
74	Kottapalem ...	Do.	Masulipatam or Tenali, 31 miles.	Tiled. One dining room and one bath room, will be supplied with furniture, a well in the compound. No pucca out-house. Only a temporary shed.

* Charges per diem: Rs. 1.
Charges per diem at other places: As. 8 for a single man and As. 12 for a married couple or family.

Taluk.	Hindus.			Musalmans.			Christians.			Others.		
	Total.	Males.	Females.	Total.	Males.	Females.	Total.	Males.	Females.	Total.	Males.	Females.
(1)	(2)	(3)	(4)	(5)	(6)	(7)	(8)	(9)	(10)	(11)	(12)	(13)
NARASAPUR DIVISION.												
Narasapur	168,604	79,030	87,574	2,370	1,088	1,284	2,215	1,062	1,153	35	21	14
Bhimavaram	155,875	75,589	80,286	2,397	1,183	1,214	8,221	3,951	4,270	40	18	22
Tannuku	263,516	127,815	135,701	4,075	2,001	2,074	2,176	1,028	1,148	91	37	54
BEWADA DIVISION.												
Bewada	132,668	67,573	65,095	11,233	5,895	5,338	3,265	1,740	1,525	159	95	64
Nandigama	141,407	71,212	70,185	10,684	5,315	5,369	5,772	2,929	2,843	323	160	163
Nuzvid	149,568	75,902	73,666	6,641	3,482	3,159	5,825	2,984	2,841	132	66	66
Tiruvur	74,672	38,418	36,354	2,546	1,355	1,191	1,932	1,039	893	25	15	10
GUDIVADA DIVISION.												
Gudivada	148,955	74,011	74,944	6,326	3,161	3,165	7,014	3,514	3,500	11	10	1
Kaikalur	59,462	30,152	29,310	649	347	302	4,380	2,240	2,140	9	6	3
ELLORE DIVISION.												
Ellore	195,296	97,878	97,418	8,347	4,228	4,119	4,514	2,297	2,317	8	3	5
Yernagudem	153,431	77,726	75,705	3,507	1,774	1,733	1,285	662	633	457	222	235
MARUPATAM DIVISION.												
Bandar	103,941	51,854	52,087	9,694	4,734	4,960	1,864	889	975	10	6	4
Divi	130,063	65,969	64,894	2,364	1,196	1,168	1,400	735	665	181	96	85
District Total ...	1,875,458	933,429	942,029	70,733	35,707	35,026	49,863	25,070	24,793	1,481	755	726

VI.—Vital Statistics.

Taluka.	Ratio per 1,000 of population of															
	Births.							Deaths.								
	1908	1906	1907	1908	1909	1910	1911	1912	1908	1906	1907	1908	1909	1910	1911	1912
(1)	(2)	(3)	(4)	(5)	(6)	(7)	(8)	(9)	(10)	(11)	(12)	(13)	(14)	(15)	(16)	(17)
NARASAPUR DIVISION.																
Narasapur	...	26	27	25	29	30	24	27	18	25	18	19	18	27	18	19
Bhimavaram	...	30	35	33	40	32	31	37	21	44	25	29	24	27	26	29
Tanuku	...	28	34	34	36	37	35	41	22	39	25	29	22	28	26	31
BEZWADA DIVISION.																
Bezwada	...	35	33	34	40	40	36	39	18	28	19	29	24	30	22	25
Nandigama	...	46	38	34	45	41	40	37	42	35	22	32	21	25	23	29
Nuzvid	...	27	32	34	33	32	34	35	15	25	20	25	17	23	20	20
Tiruvur	...	45	40	38	44	40	43	35	20	36	23	32	23	25	20	20
GUDIVADA DIVISION.																
Gudivada	...	33	37	36	34	33	38	25	19	33	25	29	21	29	18	15
Kaikalur	30	34	25	20	20
ELLORE DIVISION.																
Ellore	...	34	30	23	29	24	24	25	23	31	18	22	15	19	15	15
Yernagudem	...	38	35	34	39	38	39	35	20	32	23	28	21	27	24	21

MASULIPATAM DIVISION.																										
Bandar	35	36	34	31	33	33	28	32	32	30	18	24	20	20	25	19						
Divi	35	39	40	32	34	25	19	28	22	19						
District average											...	31	32	31	33	34	32	34	18	31	20	25	19	24	22	22
MUNICIPALITIES.																										
Masnikipatam	35	34	26	35	34	34	33	32	25	39	24	36	29	35	35	34					
Bezawada	47	43	41	43	32	42	42	30	36	46	4	34	56	34	43	31	30					
Elore	39	33	33	36	30	37	43	50	32	45	33	38	28	38	28	38	35	37				
Average											...	40	36	33	37	35	39	33	43	30	42	30	38	34	34	

NOTE.—(1) These figures include statistics relating to Europeans and Eurasians.
 (2) In calculating the ratios the figures relating to municipalities have been excluded in the salata in which they are situated.
 (3) The territorial limits of the district were revised in 1904.

VII.—Causes of Death.

(Average of statistics for the five years ending 1912.)

Taluka.	Ratio of deaths per 1,000 of population from						Total.
	Cholera.	Small-pox.	Plague.	Fever.	Dysentery and diarrhoea.	All other causes.	
(1)	(2)	(3)	(4)	(5)	(6)	(7)	(8)
NARSAPUR DIVISION.							
Narsapur	2	6	1	11	20
Bhimavaram... ..	3	1	...	9	2	12	27
Tanuku	2	12	1	12	27
BEZWADA DIVISION.							
Bezwada	1	1	...	10	...	11	23
Nandigama	1	12	1	12	26
Nuzvid	2	11	1	8	22
Tiruvur	2	13	1	8	24
GUDIVADA DIVISION.							
Gudivada	2	1	...	7	1	12	23
Kaikalur	4	1	...	2	1	15	23
ELLORE DIVISION.							
Ellore	1	1	...	10	...	5	17
Yernagudem	1	1	...	15	1	6	24
MASULIPATAM DIVISION.							
Bandar	2	1	...	6	1	12	22
Divi	2	1	...	7	1	12	23
District Average ...	2	10	1	10	23
MUNICIPALITIES.							
Masulipatam	2	1	...	7	2	22	34
Bezwada	3	5	5	26	39
Ellore	2	1	...	10	1	21	35
Average ...	2	1	...	7	2	23	35

NOTE.—(1) The above figures include statistics relating to Europeans and Eurasians.

(2) The figures relating to Kaikalur taluk represent average for two years only, as the taluk was formed in 1910.

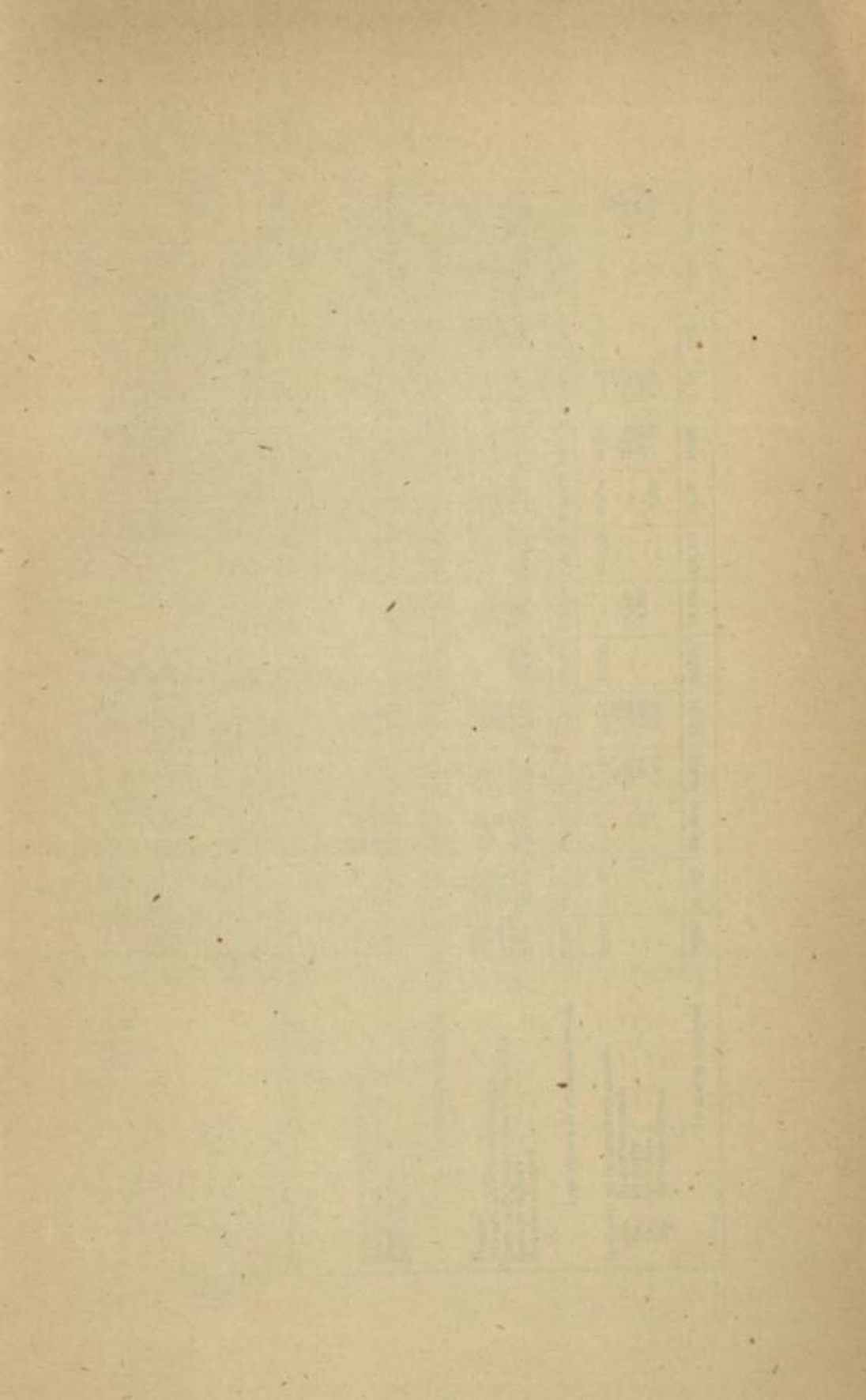
(3) Statistics relating to municipalities have not been taken into account in arriving at the above figures.

VIII.—Castes, Tribes and Races in 1911

Caste, Tribe or Race. (1)	Strength.		
	Males. (2)	Females. (3)	Total. (4)
I.—HINDU AND ANIMIST CASTES.			
(a) Tamil.			
Chetti	1,275	1,349	2,624
Palli	12,009	11,289	23,298
Yerukala	5,864	5,052	10,916
(b) Telugu.			
Baliya	3,463	3,480	6,943
Boya	1,345	1,472	2,817
Brahman	44,055	44,462	88,517
Dévānga	6,396	6,464	12,860
Gamalla	29,427	30,081	59,508
Golla	52,840	51,782	104,622
Idiga	37,888	40,404	78,292
Indra	4,269	4,573	8,842
Kalingi	1,257	1,124	2,381
Kamma	99,798	98,811	198,609
Kamsala	20,511	20,684	41,195
Kapu	122,121	125,626	247,747
Komati	29,909	28,615	58,524
Kummara	9,097	9,021	18,118
Madiga	78,247	76,122	154,369
Mala	148,699	158,105	306,804
Mangala	11,641	11,372	23,013
Mutrācha	11,690	11,841	23,531
Odde	11,000	10,634	21,634
Razu	3,287	3,372	6,659
Sāle	14,070	14,343	28,413
Sātani	1,524	1,595	3,119
Segidi	1,883	1,992	3,875
Telaga	65,537	66,331	131,868
Tsakala	26,996	28,142	55,138
Uppara	11,013	10,555	21,568
Velama	17,562	17,097	34,659
Yanadi	1,834	1,850	3,684
(c) Malayalam.		<i>Nil.</i>	
(d) Canarese.			
Jangam	2,390	2,212	4,602
Kuruba	1,268	1,236	2,504
(e) Oriya			
Karnam	1,721	1,654	3,375

VIII.—Castes, Tribes and Races in 1911—*cont.*

Caste, Tribe or Race. (1)	Strength.		
	Males. (2)	Females. (3)	Total. (4)
<i>(f) Other Madras Languages.</i>			
Brahman	1,027	1,039	2,066
Kabatriya	13,837	11,935	25,772
Lambadi	2,276	2,104	4,380
II. MUSALMAN.			
Dudekula	1,378	1,485	2,863
Pathan	1,904	1,686	3,590
Saiyad	3,331	2,971	6,302
Sheik	26,392	26,598	52,990
III. CHRISTIANS.			
Indian Christian	24,911	24,671	49,582
IV. OTHERS			
Total	994,961	1,002,574	1,997,535

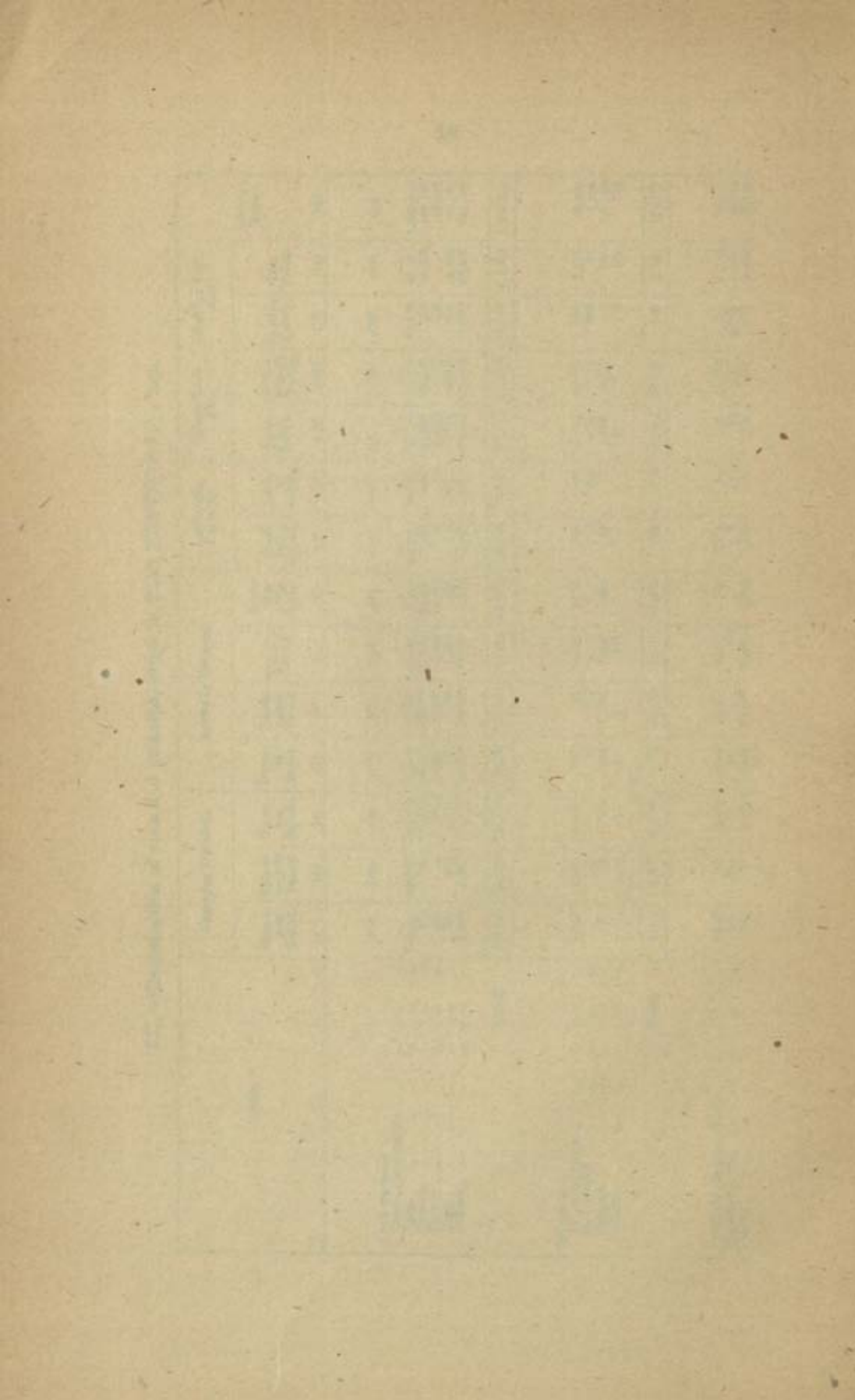


X.—Classification of area and principal crops in Faali 1322 (1912-13).

Items.	Narasapur Division.				Bezwada Division.				Gadivada Division.			Ellore Division.		Bandar Division.		District Total.
	Narasapur Taluk.	Bhimadri Taluk.	Tannuku Taluk.	Bezwada Taluk.	Nandigama Taluk.	Naravidi Taluk.	Tiruvuru Division.	Gadivada Taluk.	Kaikatur Taluk.	Ellore Taluk.	Yerragudem Taluk.	Bandar Taluk.	Dieri Taluk.	(14)	(15)	
Government (Rayotwar) land ...	116,060	131,636	106,314	134,605	246,651	3,053	...	87,982	229,889	231,220	206,220	94,273	105,033	1,740,442		
Minor man ...	37,208	33,619	30,779	17,298	31,250	29,856	10,005	10,500	6,091	6,144	4,849	198,228		
Whole man ...	10,477	2,784	19,973	2,688	9,830	15,437	8,787	64,154	23,277	1,207	...	156,714		
Zamindari ...	12,973	63,901	73,469	104,917	145,296	429,466	215,872	75,814	4,282	200,345	154,637	83,712	119,065	1,682,572		
Total area by survey ...	167,418	221,843	237,875	240,506	432,087	432,519	215,872	200,080	252,051	506,285	384,539	185,035	293,837	3,780,256		
Forests ...	3,316	10,942	2,803	30,730	27,703	...	42,064	653	2,060	29,251	7,100	31,786	32,621	181,082		
Not available for cultivation ...	35,830	58,820	28,837	23,801	80,102	...	10,447	24,644	21,787	43,050	96,182	31,212	69,258	529,845		
Culturable waste other than fallow ...	11,318	35,732	253	845	2,824	...	37,780	335	69,793	130,632	11,833	49,219	34,000	359,829		
Current fallows ...	33,812	114,004	95,892	89,047	61,632	2,604	37,780	14,653	32,554	104,722	26,833	26,833	13,215	691,335		
Net area cropped ...	88,380	148,312	174,833	123,356	248,943	205,067	116,671	152,867	86,051	170,250	130,200	64,243	115,833	1,846,405		
Area shown in village accounts ...	172,305	322,810	334,615	297,773	430,064	397,671	215,872	194,152	213,643	487,554	384,838	203,353	293,746	3,599,756		
Irrigated by Government canals ...	79,990	145,006	181,823	34,925	5,161	60,735	...	146,165	67,734	56,703	2,077	49,211	57,216	871,946		
Do, by private canals	554	8,067	9,023	...	12,755	32,766	17	342		
Do, by tanks	131	209	1,484	...	2,390	1,379	1,331	74,283		
Do, by wells	1,363	1,979	7,263	78	3,933	15,942		
Do, by other sources		
Total area irrigated ...	79,990	145,006	182,898	35,874	18,171	69,735	15,055	140,165	75,127	90,926	18,177	49,211	57,372	909,217		

IX.—Classification of area and principal crops in Fasal 1322 (1912-13)—cont.

Items.	Narasapur Division.				Borwada Division.				Gudivada Division.		Ellore Division.		Bandar Division.		District Total.												
	Narasapur Taluk.		Bhima-varam Taluk.		Tanna-ku Taluk.		Borwada Taluk.		Nandigama Taluk.		Naxayid Taluk.		Tiruvur Division.			Gudi Taluk.		Kaika-ur Taluk.		Ellore Taluk.		Yernagudem Taluk.		Bandar Taluk.		Divi Taluk.	
	(2)	(3)	(4)	(5)	(6)	(7)	(8)	(9)	(10)	(11)	(12)	(13)	(14)	(15)		(16)	(17)	(18)	(19)	(20)	(21)	(22)	(23)	(24)	(25)	(26)	(27)
Area under—																											
Cereals and pulses																											
Rice	111,216	180,328	184,700	25,623	17,963	83,985	12,755	147,134	75,317	92,715	31,543	40,538	65,807	1,080,414													
Cholum	584	151	17,723	20,915	100,316	59,083	67,850	1,914	510	41,441	49,183	422	8,220	406,135													
Gumba	454	311	311	4,620	30,534	6,023	19,698	8	28	5,978	7,776	156	...	67,187													
Basli	1,405	435	1,015	195	146	1,920	1,069	345	3,225	1,728	5,292	1,872	4,374	29,172													
Others	2,388	1,394	12,500	22,714	94,631	25,735	9,122	10,742	4,963	19,441	32,428	1,550	33,437	401,043													
Total	116,637	188,288	210,219	114,007	179,546	177,989	109,614	148,069	83,743	161,369	123,920	83,518	115,068	1,782,051													
Oil-seeds—																											
Til or Gingelly	2,947	1,028	29,629	887	95	3,800	9,121	141	166	13,111	25,983	135	1,618	86,005													
Groundnut	...	12	...	10	317	3	...	11	201	31	1	309	81	1,126													
Castors	57	38	425	1,049	17,856	1,206	1,631	39	57	6,862	10,278	1	588	39,564													
Others	563	...	18	4	157	742													
Total	3,004	2,098	29,054	1,946	18,198	5,752	10,172	290	478	20,004	34,262	539	2,444	128,067													
Condiments and spices																											
Sugarcane, etc.	1,023	184	6,886	2,381	1,475	5,562	810	2,131	19	312	2,785	571	7,798	20,417													
Coilon	302	289	137	150	...	17	...	7	232	46	314	4,250	60	5,764													
	642	87	1,814	10,316	54,386	11,585	0,669	119	537	376	823	321	2,430	88,514													



	Indigo, etc...		52		9	657	1,385	3	6			1	12	154	2,268
Dress and Narcotics—															
Tobacco	...		1,017	2	1,036	953	280	2,222	1,499	154	1	1,687	1	471	10,053
Others	...		45	2	2	1	7	57
Total	...		1,062	2	1,036	955	282	2,223	1,499	154	1	1,687	1	471	10,050
Podder crops	205	...	2	38,916	791	40,306
Orchards and garden produce	...		7,582	4,009	1,961	1,025	1,868	3,868	168	499	667	1,713	3,742	684	30,318
Miscellaneous non-food crops	...		930	140	33	...	10	138	...	150	107	...	2,291	81	4,736
Total area cropped	...		131,833	193,069	238,992	141,415	255,913	305,147	119,228	197,221	86,664	165,405	65,215	138,899	2,139,581
Deduct area cropped more than once	...		43,453	44,787	84,039	18,965	7,970	149	3,557	43,354	1,913	99,169	972	11,088	599,516
Net area cropped	...		88,380	148,312	174,853	122,350	248,943	295,007	116,771	153,867	85,651	179,359	64,243	115,852	1,540,065

X.—Reserved forest and area proposed for reservation
(in square miles) on 30th June 1913.

Taluka.	Reserved forest.	Area proposed for reservation.	Total of columns 2 and 3.	Area of taluk.	Percentage of column 4 to cultivated area.
(1)	(2)	(3)	(4)	(5)	(6)
NARSAPUR DIVISION.					
Narsapur	5.28	...	5.28	261.59	4
Bhimavaram	16.99	...	16.99	346.63	7
Tanuku	5.94	...	5.94	371.68	2
BEZWADA DIVISION.					
Bezwada	50.40	...	50.40	389.85	26
Nandigama	40.68	...	40.68	676.70	10
GUDIVADA DIVISION.					
Kaikalur	1.19	4.37	5.56	393.83	4
ELLLORE DIVISION.					
Ellore	55.09	...	55.09	791.07	22
Yernagudem	1.95	...	1.95	601.31	0.3
MASULIPATAM DIVISION.					
Bandar	49.67	...	49.67	289.12	49
Divi	51.30	...	51.30	459.12	28
Total ...	278.49	4.37	282.86	4,580.90	11

Net revenue realised under forests during

	Rs.
1904-05	41,848
1905-06	35,815
1906-07	25,671
1907-08	41,526
1908-09	17,368
1909-10	34,042
1910-11	22,746
1911-12	18,137
1912-13	33,242

Note.—The territorial limit of the district were revised in October 1904.

XI.—Classification of area and money rates according to the last settlement.

(Part I. Area under each money rate.)

Particulars.	Dry.									
	Narsapur Division.			Bezavada Division.		Godivada Division.	Ellore Division.		Masulipatam Division.	
Money rates.	Narsapur Taluk.	Bhimavaram Taluk.	Tanuku Taluk.	Bezavada Taluk.	Nandigama Taluk.	* Godivada Taluk.	Ellore Taluk.	Yernagudam Taluk.	+ Bandar Taluk.	
(1)	(2)	(3)	(4)	(5)	(6)	(7)	(8)	(9)	(10)	(11)
	RS. A.	ACS.	ACS.	ACS.	ACS.	ACS.	ACS.	ACS.	ACS.	ACS.
Ordinary dry.	7 0 ...	11	76	87
	5 0 ...	679	2,778	228 ...	6,133	9,818
	4 8	626	643
	4 4	6,739 ...	6,738
	4 0 ...	997 ...	301 ...	5,264 ...	1,284	1,610 ...	59 ...	1,471 ...	10,786
	3 12	1 ...	976 ...	1,441	3 ...	3 ...	2,424
	3 4	7	21	28
	3 0 ...	1,193 ...	1,542 ...	4,458 ...	4,795	2,969 ...	174 ...	143 ...	11,488
	2 12	14	19 ...	24 ...	57
	2 8 ...	1,209 ...	2,975 ...	1,810 ...	4,748 ...	1,920 ...	2,795 ...	925 ...	476 ...	9,773
	2 4	4	133 ...	137
	2 2	6,430 ...	18,220	24,650
	2 0 ...	1,137 ...	1,777 ...	1,509 ...	1,372	7,324 ...	1,479 ...	223 ...	961
	1 14	14 ...	2 ...	138	10,019
	1 12	106	840 ...	1,364 ...	2,218
	1 10	55 ...	3,226 ...	3,487
	1 8 ...	1,026 ...	3,630 ...	1,417 ...	179 ...	118 ...	16,479 ...	2,063 ...	192 ...	2,653
	1 4 ...	3,676 ...	5,150 ...	284 ...	15,284 ...	81,488 ...	32,063 ...	9,720 ...	5,016 ...	17,118
	1 0 ...	13,256 ...	9,528 ...	888 ...	7,960 ...	49,163 ...	12,871 ...	15,948 ...	14,576 ...	26,302
	0 12 ...	7,943 ...	355	727	21,184
0 10	611 ...	8,588 ...	22,692	22,558 ...	50,688 ...	11,203	
0 8 ...	7,141	932	28,568 ...	23,508 ...	2,938	
0 7	14	
0 5	3,227 ...	850 ...	1,636	48,574 ...	33,641	
0 4 ...	36	88,328	
										25

* The figures are for the old Godivada Taluk. With effect from 1st November 1910 a new Taluk called Kaikalur Taluk, was formed out of the old Godivada Taluk. Separate figures are not available for Kaikalur Taluk.

† Bandar Taluk was divided into Bandar and Divi Taluks with effect from October 1907. The figures given are for the old Bandar Taluk. No separate figures are available for Divi Taluk.

XI.—Classification of area and money rates according to the last settlement—*cont.*

(Part 1. Area under each money rate—*cont.*)

Particulars.	Dry— <i>cont.</i>									
	Narsapur Division.			Begwada Division.		Gudivada Division.	Ellore Division.		Masulipatam Division.	District Total.
Money rates.	Narsapur Taluk.	Elhanavaram Taluk.	Tanuku Taluk.	Begwada Taluk.	Nandizama Taluk.	* Gudivada Taluk.	Ellore Taluk.	Yernagudem Taluk.	† Bandar Taluk.	
(1)	(2)	(3)	(4)	(5)	(6)	(7)	(8)	(9)	(10)	(11)
	RS. A.	ACS.	ACS.	ACS.	ACS.	ACS.	ACS.	ACS.	ACS.	ACS.
Lanka.	11 0 ...	166	166
	9 0 ...	293	...	64	267
	7 0 ...	542	...	40	582
	5 0 ...	173	173
	4 0 ...	213	213
3 0 ...	19	19	
Padugai.	9 0 ...	57	...	237	294
	7 0 ...	319	...	332	651
	5 0 ...	568	...	335	844
	4 0 ...	551	...	159	137	1	847
	3 0 ...	280	280
2 8 ...	73	73	
Special rates.	5 8	19	19
	4 8	1
	4 4	13	1	13
	3 13	169	169
	3 7	24	24
	3 4	13	13
	3 3	94	94
	3 2	161	161
	2 0	1	15	16
	1 13	45	...	46
	1 9	20	3	23
	1 4	10	10
	1 0	3	10	13
0 19	1	...	55	1	56	
0 5	1	
Total ...	41,497	25,158	24,491	52,846	176,361	76,906	131,120	142,092	120,231	790,752

* The figures are for the old Gudivada Taluk. With effect from 1st November 1910, a new Taluk called Kalkalur Taluk was formed out of the old Gudivada Taluk. Separate figures are not available for the Kalkalur Taluk.

† Bandar Taluk was divided into Bandar and Divi Taluks with effect from October 1907. The figures given are for the old Bandar Taluk. No separate figures are available for Divi Taluk.

ANNUAL REPORT OF THE
BUREAU OF THE CENSUS

PART I. *(General Statistics)*

POPULATION		SEX		AGE	
1900	1890	Male	Female	Under 20	20 and over
76,212,342	62,948,866	37,520,000	38,728,866	24,500,000	51,748,866
80.4%	82.2%	48.6%	51.4%	38.7%	61.3%
13,842,298	13,240,329	6,532,466	6,707,863	4,100,000	9,147,863
18.2%	21.0%	17.5%	17.3%	28.9%	71.1%
1,240,000	1,040,000	590,000	650,000	600,000	640,000
1.6%	1.6%	1.6%	1.6%	2.5%	1.2%

Continued on next page

XI.—Classification of area and money rates according to the last settlement—*cont.*

(Part I. Area under each money rate—*cont.*)

Particulars.	Wet.										
	Narasapur Division.			Beawada Division.		Godivada Division.	Ellore Division.		Masulipatam Division.	District Taluk.	
	Narasapur Taluk.	Bhimavaram Taluk.	Tannuku Taluk.	Beawada Taluk.	Sandiccama Taluk.	* Godivada Taluk.	Ellore Taluk.	Yernagadam Taluk.	Bandar Taluk.		
(1)	(2)	(3)	(4)	(5)	(6)	(7)	(8)	(9)	(10)		(11)
RS. A.	ACS.	ACS.	ACS.	ACS.	ACS.	ACS.	ACS.	ACS.	ACS.	ACS.	ACS.
12 0	...	229	229
10 0	...	4,710	...	3,239	309	8,342
9 0	...	6,498	4,409	10,512	1,260	...	5,616	315	5	...	28,708
8 0	...	11,381	18,931	20,158	6,079	...	25,904	4,702	379	77	87,761
7 12	15	144	...	159
7 8	112	109	221
7 0	...	5,406	19,294	13,072	1,606	...	23,919	9,764	300	2,041	76,462
6 8	9	412	...	421
6 4	1,587	1,370	2,947
6 0	...	5,034	14,953	8,729	644	...	30,660	7,746	167	4,315	69,274
5 12	143	578	...	718
5 8	1,878	1,170	3,048
5 4	1	621	...	622
5 0	...	4,445	7,040	2,150	189	...	15,229	6,704	35	2,268	38,060
4 12	862	748	1,710
4 8	...	3,000	1,961	674	6,628	4,609	1,022	277	18,180
4 4	391	601	1,082
4 0	...	1,336	1,531	677	3	...	829	1,660	1	53	6,590
3 12	180	59	...	973	1,244	...	2,460
3 8	...	1,363	701	11	2,089	4,164
3 4	75	2,162	1,728	...	3,968
3 0	...	542	210	...	863	116	...	126	1,807
2 8	217	124	3	...	3,334	981	...	4,659
2 4	115	329	...	444
2 0	218	255	4,957	2,626	...	8,056
1 10	171	378	...	540
Total	41,553	60,030	50,721	16,663	4,266	108,715	49,955	11,027	9,031	360,301	

* The figures are for the old Godivada Taluk. With effect from 1st November 1910, a new Taluk called Kaikalur Taluk was formed out of the old Godivada Taluk. Separate figures are not available for the Kaikalur Taluk.

* Bandar Taluk was divided into Bandar and Divi Taluks with effect from October 1907. The figures given are for the old Bandar Taluk. No separate figures are available for Divi Taluk.

XI.—Classification of area and money rates according to the last settlement—cont.
 (Part 2. Classes and sorts included under each money rate.)

(a) Dry lands in the reclassified tract.

Class and sort of soil.													
First group.				Second group.				Third group.					
II	III	IV	V	VII	XII	XIII	XIV	Taram.	Rate.	Taram.	Rate.	Taram.	Rate.
1	3	5 0	4	4 0	5	3 0
2	1	4	4 0	5	3 0	6	2 8
3	2	1	5	3 0	6	2 8	7	2 0
4	3	2	1	6	2 8	7	2 0	8	1 8
5	4	3	2	1	7	2 0	8	1 8	9	1 4
...	5	4	3	1	2	1	...	8	1 8	9	1 4	10	1 0
...	...	4	2	3	2	1	...	9	1 4	10	1 0	11	0 12
...	...	5	3	4	3	2	1	10	1 0	11	0 12	12	0 8
...	4	5	...	3	2	11	0 12	12	0 8	13	0 4
...	5	3	12	0 8	13	0 4

XI.—Classification of area and money rates according to the last settlement—*cont.*
 (Part 2. Classes and sorts included under each money rate—*cont.*)

(b) *Wet lands in the reclassified tract.*

Class and sort of soil.						First class.		Second class.		Third class.		Fourth class.			
I	II	III	IV	V	XII	XIII	XIV	Taram.	Rate.	Taram.	Rate.	Taram.	Rate.	Taram.	Rate.
1	2	1	10 0	2	9 0	3	8 0	4	7 0
2	3	...	1	2	9 0	3	8 0	4	7 0	5	6 0
3	4	1	2	3	8 0	4	7 0	5	6 0	6	5 0
4	5	2	3	1	1	4	7 0	5	6 0	6	5 0	7	4 8
5	...	3	4	2	2	1	...	5	6 0	6	5 0	7	4 8	8	4 0
...	...	4	5	3	3	2	1	6	5 0	7	4 8	8	4 0	9	3 8
...	...	5	...	4	...	3	2	7	4 8	8	4 0	9	3 8	10	3 0
...	5	3	8	4 0	9	3 8	10	3 0	11	2 8

XI.—Classification of area and money rates according to the last settlement—*cont.*

(Part 2. Classes and sorts included under each money rate—*cont.*)

(c) *Divi or Avanigadda division of Bandar taluk.*

Class and sort of soil.				Dry.			
				First group.		Second group.	
				Taram.	Rate.	Taram.	Rate.
				RS. A.			R. A.
I	1	1	4 4	1	4 4
	2	2	3 0	2	3 0
	3	3	2 8	3	2 8
II	1	1	4 4	1	4 4
	2	2	3 0	2	3 0
III	1	2	3 0	3	2 8
	2	3	2 8	4	1 14
	3	5	1 8	6	1 4
IV	1	3	2 8	4	1 14
	2	4	1 14	6	1 4
	3	6	1 4	7	1 0
V	1	4	1 14	6	1 4
	2	6	1 4	7	1 0
	3	8	0 12	9	0 10
XII	1	4	1 14	5	1 8
	2	6	1 4	7	1 0
XIII	1	6	1 4	7	1 0
	2	8	0 12	9	0 10
XIV	1	8	0 12	9	0 10
	2	10	0 7	10	0 7

The following table shows the results of the analysis of the soil samples collected in the field during the summer of 1905. The samples were analyzed for the following elements: Nitrogen, Phosphorus, Potassium, Calcium, Magnesium, and Sulfur. The results are given in the following table:

Class and No. of soil	Total N		Total P	
	mg.	%	mg.	%
1	1.2	0.12	0.8	0.08
2	1.5	0.15	1.0	0.10
3	1.8	0.18	1.2	0.12
4	2.1	0.21	1.5	0.15
5	2.4	0.24	1.8	0.18
6	2.7	0.27	2.1	0.21
7	3.0	0.30	2.4	0.24
8	3.3	0.33	2.7	0.27
9	3.6	0.36	3.0	0.30
10	3.9	0.39	3.3	0.33
11	4.2	0.42	3.6	0.36
12	4.5	0.45	3.9	0.39
13	4.8	0.48	4.2	0.42
14	5.1	0.51	4.5	0.45
15	5.4	0.54	4.8	0.48
16	5.7	0.57	5.1	0.51
17	6.0	0.60	5.4	0.54
18	6.3	0.63	5.7	0.57
19	6.6	0.66	6.0	0.60
20	6.9	0.69	6.3	0.63
21	7.2	0.72	6.6	0.66
22	7.5	0.75	6.9	0.69
23	7.8	0.78	7.2	0.72
24	8.1	0.81	7.5	0.75
25	8.4	0.84	7.8	0.78
26	8.7	0.87	8.1	0.81
27	9.0	0.90	8.4	0.84
28	9.3	0.93	8.7	0.87
29	9.6	0.96	9.0	0.90
30	9.9	0.99	9.3	0.93

XI.—Classification of area and money rates according to the last settlement—*cont.*

(Part 2. Classes and sorts included under each money rate—*cont.*)

(d) Upland tracts.

Class and sort of soil.				Dry, Third group.		Wet, Third class.	
				Taram.	Rate.	Taram.	Rate.
					RS. A.		RS. A.
I	1	3 12
				2	2 8	2	6 4
				3	1 14
II	1	3 12	1	7 8
				2	2 2	2	6 4
III	3	2 2	3	5 8
				2	1 4	5	4 4
				3	1 0	7	3 0
IV	6	1 4	2	6 4
				7	1 0	4	4 12
				8	0 10	6	3 12
V	7	1 0	5	4 4
				8	0 10	7	3 0
				9	0 5	8	2 8
VI	5	1 8	3	5 8
				7	1 0	5	4 4
VII	7	1 0	4	4 12
				8	0 10	6	3 12
VIII	8	0 10	6	3 12
				9	0 5	7	3 0
XII	7	1 0
				8	0 10
XIII	8	0 10
				9	0 5
XIV	8	0 10
				9	0 5

XI.—Classification of area and money rates according to the last settlement—*cont.*

(Part 2. Classes and sorts included under each money rate—*cont.*)

(e) *Dry scale of Padugai and Lanka lands.*

I	II	Padugai.				Lanka.			
		First group.		Second group.		First group.		Second group.	
		Taram.	Rate.	Taram.	Rate.	Taram.	Rate.	Taram.	Rate.
			RS. A.		RS. A.		RS. A.		RS. A.
1-A	2	9 0	3	7 0	1	11 0	2	9 0
1	1-A	3	7 0	4	5 0	2	9 0	3	7 0
2	1	4	5 0	5	4 0	3	7 0	4	5 0
3	2	5	4 0	6	3 0	4	5 0	5	4 0
4	3	6	3 0	7	2 8	5	4 0	6	3 0
5	4	7	2 8	8	2 0	6	3 0	7	2 8
6	5	8	2 0	9	1 8	7	2 8	8	2 0

XII.—Rainfall.

Names of rain-gauge stations.	Average rainfall (1870-1900) in inches in												
	(2)	(3)	(4)	(5)	(6)	(7)	(8)	(9)	(10)	(11)	(12)	(13)	(14)
(1)	January.	February.	March.	April.	May.	June.	July.	August.	Septem-ber.	October.	Novem-ber.	Decem-ber.	Whole year.
NARASIPUR TALUK.													
Narasapur	0.16	0.17	0.20	0.38	1.36	4.00	5.92	7.27	7.46	8.53	5.22	0.31	41.87
BHIMAVARAM TALUK.													
Bhimavaram	0.14	0.22	0.20	0.37	1.08	4.36	5.71	5.7	0.33	0.82	3.03	0.51	20.74
TANUKU TALUK.													
Pontapadu	0.13	0.21	0.37	0.61	1.47	4.00	6.13	6.81	6.88	6.00	0.33	0.05	35.79
Tanuku	0.06	0.15	0.41	0.60	1.71	4.47	6.34	6.19	6.56	6.38	2.99	0.32	36.18
BESWADA TALUK.													
Beswada	0.20	0.23	0.41	0.43	1.22	4.88	6.06	6.24	6.02	5.07	2.16	0.40	33.61
NAFDIGAMA TALUK.													
Jazayyapeta *	0.37	0.35	0.28	1.37	0.65	3.02	5.25	5.78	5.43	3.20	0.90	0.41	27.47
Nandigama	0.37	0.26	0.43	0.49	1.46	4.05	6.34	6.55	6.08	3.67	1.06	0.33	32.29
NEVVIDI TALUK.													
Gannavaram †	0.14	0.28	0.32	0.59	1.19	5.00	6.71	6.42	6.01	0.44	4.06	1.61	32.94
TIREYER DIVISION.													
Vissannapeta or Tircur †	0.15	0.21	0.52	0.62	1.36	5.54	9.46	7.49	6.12	3.45	0.97	0.20	36.18

* 1896-1900. † 1884-1900.

XII.—Rainfall—cont.

Names of rain-gauge stations.	Average rainfall (1870—1900) in inches in													
	(1)	(2)	(3)	(4)	(5)	(6)	(7)	(8)	(9)	(10)	(11)	(12)	(13)	(14)
(1)	January.	February.	March.	April.	May.	June.	July.	August.	Septem-ber.	October.	Novem-ber.	Decem-ber.	Whole year.	
GUDIVADA TALUK.														
Gudivada	0.16	0.19	0.40	0.60	1.02	3.88	5.72	6.18	5.02	6.47	3.96	0.41	34.90	
KAIKALURU TALUK.														
Kaikaluru *	0.20	0.46	0.15	0.76	1.76	4.07	6.04	7.54	7.54	3.92	1.53	0.27	33.03	
ELLORA TALUK.														
Chintalapudi	0.13	0.20	0.44	0.90	1.53	5.05	8.05	7.48	7.23	4.58	1.33	0.27	30.01	
Ellora	0.15	0.21	0.42	0.49	1.34	4.54	5.97	6.86	7.33	6.04	2.03	0.34	35.72	
YERNAGUDU TALUK.														
Yernagudem	0.10	0.26	0.40	1.12	2.24	4.90	6.03	6.76	7.67	5.22	1.73	0.24	37.46	
BANBAR TALUK.														
Bandar or Manulipatam	0.23	0.42	0.56	0.23	1.03	4.28	5.75	6.54	6.00	8.12	4.64	0.77	36.68	
Manulipatam †	0.16	0.64	0.20	0.81	1.00	5.21	7.82	6.24	3.88	6.03	2.21	1.18	36.00	
Pandiraka †	0.28	0.06	0.20	1.11	1.50	4.34	6.35	5.86	4.19	5.00	2.00	0.28	32.05	
DIVI TALUK.														
Avanigadda †	0.51	1.10	0.49	0.67	1.05	3.82	5.80	7.56	6.99	7.07	3.06	1.19	30.21	
District Average	0.17	0.25	0.38	0.58	1.47	4.39	6.58	6.83	6.66	5.94	2.71	0.40	35.96	

* 1869—1900. † 1900—1909.

Year	1	2	3	4	5	6	7	8	9	10	11	12
1870	1	2	3	4	5	6	7	8	9	10	11	12
1871	1	2	3	4	5	6	7	8	9	10	11	12
1872	1	2	3	4	5	6	7	8	9	10	11	12
1873	1	2	3	4	5	6	7	8	9	10	11	12
1874	1	2	3	4	5	6	7	8	9	10	11	12
1875	1	2	3	4	5	6	7	8	9	10	11	12
1876	1	2	3	4	5	6	7	8	9	10	11	12
1877	1	2	3	4	5	6	7	8	9	10	11	12
1878	1	2	3	4	5	6	7	8	9	10	11	12
1879	1	2	3	4	5	6	7	8	9	10	11	12
1880	1	2	3	4	5	6	7	8	9	10	11	12
1881	1	2	3	4	5	6	7	8	9	10	11	12
1882	1	2	3	4	5	6	7	8	9	10	11	12
1883	1	2	3	4	5	6	7	8	9	10	11	12
1884	1	2	3	4	5	6	7	8	9	10	11	12
1885	1	2	3	4	5	6	7	8	9	10	11	12
1886	1	2	3	4	5	6	7	8	9	10	11	12
1887	1	2	3	4	5	6	7	8	9	10	11	12
1888	1	2	3	4	5	6	7	8	9	10	11	12
1889	1	2	3	4	5	6	7	8	9	10	11	12
1890	1	2	3	4	5	6	7	8	9	10	11	12
1891	1	2	3	4	5	6	7	8	9	10	11	12
1892	1	2	3	4	5	6	7	8	9	10	11	12
1893	1	2	3	4	5	6	7	8	9	10	11	12
1894	1	2	3	4	5	6	7	8	9	10	11	12
1895	1	2	3	4	5	6	7	8	9	10	11	12
1896	1	2	3	4	5	6	7	8	9	10	11	12
1897	1	2	3	4	5	6	7	8	9	10	11	12
1898	1	2	3	4	5	6	7	8	9	10	11	12
1899	1	2	3	4	5	6	7	8	9	10	11	12
1900	1	2	3	4	5	6	7	8	9	10	11	12

XIII.—Holdings, Cultivation and Demand in Fasal 1322 (1912-13).

Taluk.	Total holdings.										Cultivation including waste charged.			Total demand of Land Revenue Ryotwar, Miscellaneous Revenue, and Cesses.	Total demand	RS.	Miscellaneous revenue.	RS.	Total ryotwar demand	RS.	Cesses.	RS.	Total demand of Land Revenue Ryotwar, Miscellaneous Revenue, and Cesses.	
	Dry.					Wet.					Dry.		Wet.											
	Extent.		Assessment.		Total.	Extent.		Assessment.		Total.	Extent.		Assessment.											
	ACS.	RS.	ACS.	RS.		ACS.	RS.	ACS.	RS.		ACS.	RS.	ACS.											RS.
(1)	(2)	(3)	(4)	(5)	(6)	(7)	(8)	(9)	(10)	(11)	(12)	(13)	(14)	(15)										
NARASAPUR DIVISION.																								
Narasapur	21,701	45,738	45,991	3,12,885	66,065	3,68,623	22,697	74,249	43,210	4,00,044	2,50,482	7,18,035	63,691	7,75,036										
Rhimavaram	15,626	27,030	69,379	4,70,092	84,003	4,97,082	15,479	64,919	69,359	5,85,765	2,35,091	8,35,480	74,947	9,10,433										
Taunku	25,845	57,652	67,145	4,34,243	89,963	5,01,875	23,672	1,29,297	57,393	5,35,083	5,50,070	11,75,865	1,04,978	12,80,843										
BEVADA DIVISION.																								
Bevada	53,458	80,713	14,790	1,05,542	68,254	1,81,255	5,344	1,08,221	14,883	1,04,288	86,188	2,07,027	24,649	3,32,579										
Nandigama	175,945	2,11,451	4,143	23,260	179,188	2,30,751	1,76,683	2,29,766	3,668	21,885	15,414	2,60,369	33,060	3,00,378										
Nuvud	3,019	5,359	268	3,843	4,214	6,202	3,004	3,831	595	3,842	2,87,000	2,94,179	24,252	3,18,431										
Tiruvur	673	645	105	489	778	1,184	673	645	105	489	339	1,397	1,655	3,082										
GUDIVADA DIVISION.																								
Gudivada	19,017	27,913	61,072	4,60,419	71,069	4,88,392	9,892	51,878	61,921	4,49,812	3,41,183	8,50,809	72,896	9,23,186										
Kakalur	45,110	58,080	45,079	2,63,183	90,189	8,11,233	42,914	1,13,273	43,785	2,46,230	75,433	4,54,823	36,166	4,70,989										
ELLORE DIVISION.																								
Ellore	89,856	68,105	51,218	2,65,789	1,41,074	3,31,975	90,616	1,09,076	51,190	2,64,974	59,349	4,32,547	35,485	4,67,732										
Yernagudem	1,04,308	1,07,789	8,882	35,912	1,13,055	1,45,701	1,04,274	1,12,058	8,844	37,549	34,563	1,84,083	21,829	2,05,913										
MARUPATTAM DIVISION.																								
Basdar Div	35,176	35,889	11,412	65,917	46,588	1,01,806	35,086	60,015	11,435	66,349	1,53,314	2,70,289	23,389	3,02,647										
Huzur Collectors	45,197	1,04,746	45,197	1,04,746	45,177	2,05,804	2,27,246	4,31,850	32,722	4,64,572										
Total	694,596	8,47,180	307,664	24,27,135	992,450	32,74,315	623,616	12,44,082	366,648	26,89,197	23,02,262	62,15,689	5,40,361	67,56,050										

XIV.—Revenue payable by permanently-settled estates in
Fasli 1322 (1912-13).

Serial number.	Taluk and estates.	Peishouah.	Land-cess.	Miscellaneous revenue.	Total.
(1)	(2)	(3)	(4)	(5)	(6)
NARSAPUR DIVISION.					
<i>Narsapur Taluk.</i>					
		RS.	RS.	RS.	RS.
1	Chinchinada	781	171	540	1,492
2	Chinamamidipalli	224	208	11,680	12,112
3	Chandaparru	809	374	5,642	6,825
4	Yelamanchili	5,427	696	9,348	15,471
5	Gondi	462	74	681	1,217
6	Gumparru	...	291	8,312	8,603
7	Kalagampudi and Peddamamidipalli	979	138	1,924	3,041
8	Navarasapuram	1,258	192	3,232	4,682
9	Neredumilli	445	78	2,791	3,314
10	Ravipadu	676	70	3,765	4,511
11	Varidhanam	530	143	1,569	2,242
	Total	11,591	2,435	49,484	63,510
<i>Bhimavaram Taluk.</i>					
1	Baharzalli	...	15,602	1,07,361	1,22,963
2	Konitivada	1,993	551	3,634	6,178
	Total	1,993	16,153	1,10,995	1,29,141
<i>Tanuku Taluk.</i>					
1	Nidadavole	12,511	8,184	1,71,958	1,92,653
2	Vundrajavaram	2,044	459	4,504	7,007
	Total	14,555	8,643	1,76,462	1,99,660
BEZWADA DIVISION.					
<i>Bezwada Taluk.</i>					
1	Narasayagudem, Part I Estate	35	37	...	72
2	Part II Estate	104	111	3	218
3	Mailavaram Vantu Estate	3,873	1,366	364	5,603
4	Mailavaram 1½ Vantu	4,142	1,945	746	6,833
5	Pulluru Estate	675	293	18	986
6	North Valluru	10,335	4,643	25,794	40,772
7	South Valluru	10,124	4,675	17,373	32,172
8	Chevendra	...	545	6,430	6,975
	Total	29,288	13,615	50,728	93,631

XIV.—Revenue payable by permanently-settled estates in
Fasli 1322 (1912-13)—*cont.*

Serial number.	Taluks and estates.	Peishcush.	Land-cess.	Miscellaneous revenue.	Total.
(1)	(2)	(3)	(4)	(5)	(6)
BEZWADA DIVISION—<i>cont.</i>					
Nandigama Taluk.					
		RS.	RS.	RS.	RS.
1	Chintalapati Vantu	17,523	5,329	1,462	24,314
2	Mungaala	4,497	10,970	2,658	18,123
3	Lingariri	486	1,145	861	2,492
4	Jayantipuram and Popuru Estate.	190	190
	Total ...	22,506	17,444	5,169	45,119
Nuzvid Taluk.					
1	Gannavaram *	5,107	2,619	4,106	11,832
2	Ventrappagada *	5,405	2,103	16,502	24,010
3	Musunuru *	4,754	2,202	8,806	15,762
4	Telaprolu *	12,675	4,751	28,711	46,137
5	Kapileswarapuram *	15,756	6,270	27,035	49,061
6	Meduru *	16,240	5,854	37,457	59,551
7	Vuyyuru *	15,530	7,933	3,493	26,956
8	Mirzapuram *	15,834	7,120	34,663	57,617
9	Pottipad	424	...	424
10	Potavarappad	133	...	133
11	Tammagudem	61	...	61
	Total ...	91,301	39,470	1,60,773	2,91,544
TIRUVUR DIVISION.					
1	Vutukuru	2,180	1,883	1,018	5,081
2	Nadimi Tiruvuru	2,201	2,095	977	5,273
3	Gampalagudem East	1,311	1,557	517	3,385
4	Gampalagudem West	1,291	1,247	594	3,132
5	Komira	711	843	302	1,856
6	Vinagadapa	928	1,088	273	2,289
7	Kakerla Mallavaram	168	273	52	491
8	Lingala	136	77	100	313
9	Chanubanda	1,357	537	631	2,525
10	Vissannapeta	1,237	1,183	854	3,274
11	Narasapuram	274	316	377	967
12	Chandrapatta	154	114	160	428
13	Bangapuram	453	550	182	1,185
14	Vemireddipalli	398	321	248	967
15	Narakullapada	135	176	226	537
16	Muchanapalli and Gollamandala.	502	502	291	1,295
17	Reddigudem	684	410	339	1,433
18	Repudi	296	243	250	789
19	Kunaparasuparava	358	392	215	965
20	Maddalapuram	425	187	128	740

* Peishcush and land-cess of the first eight villages were collected in the Nuzvid taluk and miscellaneous revenue in Gudivada taluk.

XIV.—Revenue payable by permanently-settled estates in
Fasli 1322 (1912-13)—cont.

Serial number.	Taluks and estates.	Peishcush.	Land-cess.	Miscellaneous revenue.	Total.
(1)	(2)	(3)	(4)	(5)	(6)
	TIRUVUR DIVISION—cont.	RS.	RS.	RS.	RS.
21	Kalagara	835	467	155	1,457
22	Penugolani	1,262	577	373	2,212
23	Kambhampadu and Konduru ...	476	383	68	927
24	Munkulla	71	253	86	410
25	Kokilampadu	82	387	33	502
26	Patrila	541	639	93	1,273
27	Rajavaram	413	255	100	768
28	Rampimalla	404	144	75	623
29	Akkapalem	336	315	46	697
30	Erravadu	404	152	147	703
31	Vamsuntla	342	204	68	612
32	Rajapeta	336	241	51	628
	Total ...	20,699	18,011	9,027	47,737
	GUDIVADA DIVISION.				
	<i>Gudivada Taluk.</i>				
1	Chevendra Estate	4,681	2,113	5,416	12,210
	<i>Kaikalur Taluk.</i>				
1	Chevendra Estate	3,234	3,234
	ELLORE DIVISION.				
	<i>Ellore Taluk.</i>				
1	Ambarapeta	16,064	3,024	1,935	21,023
2	Tangellamudi	3,175	1,173	1,817	6,170
3	Malkapuram	1,829	676	4,725	7,230
4	Duddepudi	378	86	5	469
5	Narayanapuram	2,859	996	564	4,419
6	Vasantavada	2,504	1,087	11,299	14,890
7	Koppaka	4,829	2,024	18,125	24,978
8	Malakacherla	1,495	333	4	1,832
9	Kottapalli	87	70	9	166
10	Timmanagudem A.	11	6	1	18
...	Timmanagudem B.	43	14	...	57
...	Timmanagudem C.	11	8	...	19
11	Vadlapattanntham	85	43	...	128
12	Singagudem	46	153	76	275
13	Bhogolu	9	...	181	190
14	Vijayarayi Akivida † Bhogolu ...	7	214	106	326
15	Badarala Battevaram † Bhogolu.	...	159	74	233
16	Bapirajugudem † Bhogolu	300	103	403

10
 III - Income of all the permanently blind under 18
 Part 2 (1931) - cont.

Name	Family	Income		Total
		1931	1930	
Family 21				
John J. Smith				
John J. Smith				
17. Charles J. Smith		200	150	350
18. Charles J. Smith		150	100	250
19. Charles J. Smith		50	50	100
20. Charles J. Smith		50	50	100
Total		450	350	800
Family 22				
John J. Smith				
1. John J. Smith	2100	1000	300	3400
2. John J. Smith	500	200	50	750
3. John J. Smith	200	100	20	320
4. John J. Smith	1000	500	100	1600
5. John J. Smith	300	150	30	480
6. John J. Smith	200	100	20	320
7. John J. Smith	100	50	10	160
8. John J. Smith	500	250	50	800
9. John J. Smith	100	50	10	160
10. John J. Smith	100	50	10	160
11. John J. Smith	100	50	10	160
12. John J. Smith	100	50	10	160
13. John J. Smith	100	50	10	160
14. John J. Smith	100	50	10	160
15. John J. Smith	100	50	10	160
16. John J. Smith	100	50	10	160
17. John J. Smith	100	50	10	160
18. John J. Smith	100	50	10	160
19. John J. Smith	100	50	10	160
20. John J. Smith	100	50	10	160
Total	4100	2000	500	6600

STATE OF CALIFORNIA
DEPARTMENT OF AGRICULTURE
DIVISION OF STATISTICS

CROP	ACRES	1910		1909
		Value	Yield	
Grain				
Wheat	1,200,000	100,000,000	100,000,000	100,000,000
Oats	500,000	25,000,000	25,000,000	25,000,000
Barley	300,000	15,000,000	15,000,000	15,000,000
Rye	100,000	5,000,000	5,000,000	5,000,000
Triticum	50,000	2,500,000	2,500,000	2,500,000
Speltz	20,000	1,000,000	1,000,000	1,000,000
Other	10,000	500,000	500,000	500,000
Total Grain	2,180,000	148,500,000	148,500,000	148,500,000
Hay				
Alfalfa	1,000,000	100,000,000	100,000,000	100,000,000
Other	500,000	25,000,000	25,000,000	25,000,000
Total Hay	1,500,000	125,000,000	125,000,000	125,000,000
Other Crops				
Apples	100,000	10,000,000	10,000,000	10,000,000
Oranges	50,000	5,000,000	5,000,000	5,000,000
Wine Grapes	200,000	20,000,000	20,000,000	20,000,000
Other	100,000	5,000,000	5,000,000	5,000,000
Total Other Crops	450,000	40,000,000	40,000,000	40,000,000
Total Crops	3,130,000	213,500,000	213,500,000	213,500,000

XIV.—Revenue payable by permanently-settled estates in
Fasli 1322 (1912-13)—cont.

Serial number.	Taluks and estates.	Peishcush.	Land-cess.	Miscellaneous revenue.	Total.
(1)	(2)	(3)	(4)	(5)	(6)
ELLORE DIVISION—cont.					
<i>Ellore Taluk—cont.</i>					
17	Konicherla † Bhogolu	286	184	460
18	Vegivada Kondalra vupalem † Bhogolu.	...	279	100	379
19	Satrapadu	42	78	120
20	Konicherla	3	...	3
	Total ...	33,432	10,981	39,365	83,778
<i>Yernagudem Taluk.</i>					
1	Annadevarapeta	3,729	1,338	340	5,407
2	Anumunilanka	616	161	64	841
3	Bhimavolu (A)	605	253	74	1,790
4	Bhimavolu (B)	605	253		
5	Borraupalem	1,940	1,043	125	3,108
6	Chidipi	1,668	264	75	2,005
7	Dharmavaram	2,412	600	273	3,285
8	Dhumantunigudem	143	66	20	229
9	Gajjaram	693	227	232	1,152
10	Gaddigudem	483	184	17	684
11	Gavaravaram	145	108	4	257
12	Gauripatnam	1,852	313	144	2,309
13	Gundepalli	939	970	742	2,651
14	Jagannathapuram	113	81	11	205
15	Kunmaragunta	647	291	21	959
16	Kalavalapalli	1,347	407	63	1,817
17	Kondagudem	753	608	39	1,400
18	Kurukuru	1,482	296	79	1,857
19	Lakkavaram	2,611	1,047	141	3,799
20	Malakapalli	2,282	473	259	3,014
21	Nandigudem	373	544	74	991
22	Nallamilipadu	203	56	17	276
23	Peddeham	2,629	406	437	3,472
24	Paidimetta	71	83	13	167
25	Prakkilanka	1,766	6,651	126	8,543
26	Tirugudemetta	1,857	237	180	2,274
27	Tyajampudi	2,791	516	220	3,527
28	Telikicherla	944	503	46	1,493
29	Vegavaram	784	293	79	1,156
30	Vunakarsmilli	1,636	325	1,265	3,216
31	Yernagudem (A)	1,640	690	125	2,455
32	Yernagudem (B. 1)	38	12	...	50
33	Yernagudem (B. 2)	48	15	...	63
34	Yerrampeta	1,077	747	36	1,860
35	Ponguturu	523	353	98	974
36	Yadavolu	563	394	100	1,057
	Total ...	42,006	20,808	5,529	68,343

XIV.—Revenue payable by permanently-settled estates in
Fasli 1322 (1912-13)—*cont.*

Serial number.	Taluks and estates.	Peishcush.	Land-cess.	Miscellaneous revenue.	Total.
(1)	(2)	(3)	(4)	(5)	(6)
	MASULIPATAM DIVISION.	RS.	RS.	RS.	RS.
	<i>Bondar Taluk.</i>				
1	Guduru Estate	681	959	58,457	60,097
2	Vadlamannadu Estate	711	1,216	50,956	61,883
3	Kruthivenu Estate	2,831	1,061	13,508	17,400
4	{ Chittiguduru (1)	175	} 85	2,484	3,093
	{ Chittiguduru (2)	349			
5	Nayavaram	909	193	1,421	2,523
6	Sultanagaram Gollapalem	181	239	10,943	11,363
7	Pinagudurulanka	319	47	1,625	1,991
8	Balliparra	424	122	170	716
9	Devarapalli	461	75	1,186	1,722
	Total ...	7,041	3,997	1,49,750	1,60,788
	<i>Diwi Taluk.</i>				
1	Devarakota Estate ...	79,507	16,720	1,72,684	2,68,911
	District total ...	3,58,600	1,70,390	9,38,616	14,67,606

XV. — Demand, Collection and Balance of Current Land Revenue and Cesses (in thousands of rupees).

Taluka.	Demand.										Collected or written off.										Balance.				
	(1)	(2)	(3)	(4)	(5)	(6)	(7)	(8)	(9)	(10)	(11)	(12)	(13)	(14)	(15)	(16)	(17)	(18)	(19)	(20)	(21)	(22)	(23)	(24)	(25)
NARSAPUR DIVISION.																									
Narasapur ...	738	696	739	774	775	765	771	798	696	737	774	770	740	707	797
Rhinavaram
Taluka
BELWADA DIVISION.																									
Belwada
Nandigama
Narvid
Tiruvur
GUDIVADA DIVISION.																									
Godivada
Kalkalur
ELLORE DIVISION.																									
Ellore
Yerragudem
MARULIPATAM DIVISION.																									
Randar
Diviy
Huzur Collections
District total ...	6,715	6,528	6,928	7,069	7,210	7,304	7,581	7,531	6,712	6,524	6,810	7,080	7,161	7,298	7,662	7,511	11	22	18	30	49	66	19	20	

† Two thousand rupees remitted.

† This taluk was formed on 1st November 1910.

NOTE.—The territorial limits of the district were revised in October 1904.

* The taluk was formed in October 1907.

XVI.—Remissions (in thousands of rupees).

Taluks.	Waste remitted.								
	Wet.								Total.
	Fasli 1315.	Fasli 1316.	Fasli 1317.	Fasli 1318.	Fasli 1319.	Fasli 1320.	Fasli 1321.	Fasli 1322.	
(1)	(2)	(3)	(4)	(5)	(6)	(7)	(8)	(9)	(10)
NARSAPUR DIVISION.									
Narsapur	1	...	1	...	4	1	...	1	7
Bhimavaram	1	2	1	1	1	1	7
Tanuku	1	1
BEZWADA DIVISION.									
Bezwada	13	...	1	1	...	15
Nandigama	9	1	3	6	1	1	7	1	29
Nuzvid
Tiruvur
GUDIVADA DIVISION.									
Gudivada	5	...	1	4	3	20
Kalkalur	1	...	1
ELLORE DIVISION.									
Ellore	10	3	1	...	3	...	17
Yernagudem	1	1	2
MASULIPATAM DIVISION.									
Bandar	1	1	2
Divi
Total ...	41	11	9	14	7	3	13	3	101
Waste remitted—cont.									
Dry.									
NARSAPUR DIVISION.									
Narsapur
Bhimavaram
Tanuku
BEZWADA DIVISION.									
Bezwada
Nandigama
Nuzvid
Tiruvur
GUDIVADA DIVISION.									
Gudivada
Kalkalur
ELLORE DIVISION.									
Ellore
Yernagudem
MASULIPATAM DIVISION.									
Bandar	6	1	7
Divi	1	1
Total ...	6	1	1	8

XVI.—Remissions (in thousands of rupees)—*cont.*

	Other seasonal remissions (excluding fixed remissions).								Total. (19)
	Faali 1315. (11)	Faali 1316. (12)	Faali 1317. (13)	Faali 1318. (14)	Faali 1319. (15)	Faali 1320. (16)	Faali 1321. (17)	Faali 1322. (18)	
NARSAPUR DIVISION.									
Narsapur	5	2	3	2	3	2	3	5	30
Bhimavaram	12	2	5	2	1	2	1	3	21
Tanuku	1	2	6	1	11
BEZWADA DIVISION.									
Bezwada	10	1	3	...	4	1	1	...	20
Nandigama	4	5	4	1	3	...	3	...	20
Nuzvid
Tiruvur
GUDIVADA DIVISION.									
Gudivada	5	4	2	7	13	31
Kaikalur	3	4	1	8
ELLORE DIVISION.									
Ellore	8	1	16	5	3	2	5	1	41
Yernagudem	2	...	4	4	1	11
MASULIPATAM DIVISION									
Bandar	17	3	2	1	1	1	25
Divi	2	1	1	1	5
Total	53	20	40	30	32	11	17	11	223

NOTE.—The limits of the district were revised in October 1904. Hence figures have been furnished for eight years only. Divi taluk was formed in Faali 1317 and Kaikalur taluk in Faali 1320.

XVII.—Land Improvement and Agriculturists' Loans

Taluka.	Total amount advanced under the Land Improvement and Agriculturists' Loans Acts in												Total recovered.
	(2)	(3)	(4)	(5)	(6)	(7)	(8)	(9)	(10)	(11)	(12)	(13)	
	Rs.	Rs.	Rs.	Rs.	Rs.	Rs.	Rs.	Rs.	Rs.	Rs.	Rs.	Rs.	Rs.
NARSAPUR DIVISION.													
Narsapur
Bhimavaram
Tanuku
BEEWADA DIVISION.													
Bezwada
Nandigama
Nasvid
Tiruvur
GUDIVADA DIVISION.													
Gudivada
Kaikalur
ELLORE DIVISION.													
Ellore
Yernagudam
MARUPATAM DIVISION.													
Bandar
Divi
Total	9,000	4,000	200	6,050	17,792	750	1,350	11,685	13,325	9,765	76,143	42,989	

XVIII.—Prices in seers per rupee.

(1)	Narsapur Division.			Bezavada Division.			Gudivada Division.		Ellore Division.			Masulipatam Division.		(18) District Average.			
	(2) Narsapur Taluk.	(3) Bhimavaram Taluk.	(4) Tanuku Taluk.	(5) Bezavada Taluk.	(6) Jaggyyapeta.	(7) Nandigama Taluk.	(8) Nuzvid Taluk.	(9) Tiruvur Division.	(10) Gudivada Taluk.	(11) Kalkatur Taluk.	(12) Ellore Taluk.	(13) Chintalapudi.	(14) Ellore.		(15) Tallapudi (Kovvur).	(16) Yernagudem Taluk.	(17) Bandar Taluk.
1313	141	142	142	147	120	134	122	127	122	139	...	140	148	138	126	135	135
1314	131	127	130	130	120	129	115	118	119	137	...	123	132	128	110	121	124
1315	1071	1118	1056	1087	1026	992	1198	1016	1020	1030	...	1006	961	1138	928	1023	1050
1316	81	93	98	90	76	97	113	88	99	89	88	92	87	93	92
1317	85	93	91	86	73	97	102	82	85	84	85	76	85	87	86
1318	79	84	85	78	77	79	75	75	72	72	80	73	78	68	77
1319	100	106	112	103	97	88	91	94	85	86	99	100	93	78	95
1320	103	105	112	103	91	89	95	104	102	109	109	89	107	98	93	86	99
1321	84	94	97	93	84	81	83	94	83	80	80	94	90	80	81	80	86
1322	73	82	82	77	77	63	76	80	66	72	72	61	77	74	80	73	76

Rice (second sort)

XVIII.—Prices in seers per rupee—cont.

Fash.	Narsapur Division.				Bezawada Division.				Gudivada Division.				Ellore Division.				Masulipatam Division.		(18) District Average.
	(1)	(2) Narsapur Taluk	(3) Bhimsavaram Taluk.	(4) Pentapadu.	(5) Tanuka.	(6) Bezawada Taluk.	(7) Jaggyyapeta.	(8) Nandigama Taluk.	(9) Nuzvid Taluk.	(10) Tiruvur.	(11) Gudivada Taluk	(12) Kalkalur Taluk.	(13) Chinatalapudi.	(14) Ellore Taluk.	(15) Tallapudi (Kovvur).	(16) Masulipatam (Bandar).	(17) Divi Taluk.		
1313	...	23.2	...	22.4	21.0	27.7	22.4	20.9	22.7	...	25.6	19.9	19.5	20.4	20.9	22.2	
1314	...	20.0	17.6	20.4	18.4	22.7	20.5	...	19.7	23.1	...	20.2	18.6	18.7	16.9	18.7	18.7	19.7	
1315	...	16.17	16.17	16.36	15.12	16.30	16.81	...	15.89	16.57	...	15.20	14.76	16.04	13.41	16.28	15.73	15.73	
1316	...	13.0	13.8	14.7	12.4	12.4	15.8	...	14.4	16.1	...	13.9	14.3	13.9	12.6	14.4	14.0	14.0	
1317	...	13.7	13.1	13.7	11.8	12.7	14.1	...	13.4	13.8	...	14.4	12.9	12.1	16.9	13.6	13.6	13.6	
1318	...	12.6	12.3	11.1	11.0	11.6	13.9	...	13.5	10.3	...	11.8	10.2	...	10.6	10.3	11.6	11.6	
1319	...	14.2	15.8	14.7	15.6	15.0	13.5	...	13.7	11.7	...	13.0	12.4	...	12.6	12.0	13.7	13.7	
1320	...	16.6	17.0	14.8	16.3	15.6	13.1	...	14.7	13.3	...	14.5	14.2	...	12.7	14.8	15.3	15.3	
1321	...	13.5	13.7	13.5	13.1	13.6	13.1	...	15.6	14.1	...	14.7	12.6	...	12.6	13.0	13.5	13.5	
1322	...	11.7	12.0	11.5	11.3	11.5	11.8	...	11.9	13.9	...	11.5	10.6	...	13.0	13.8	13.8	11.8	

Paddy (first sort).

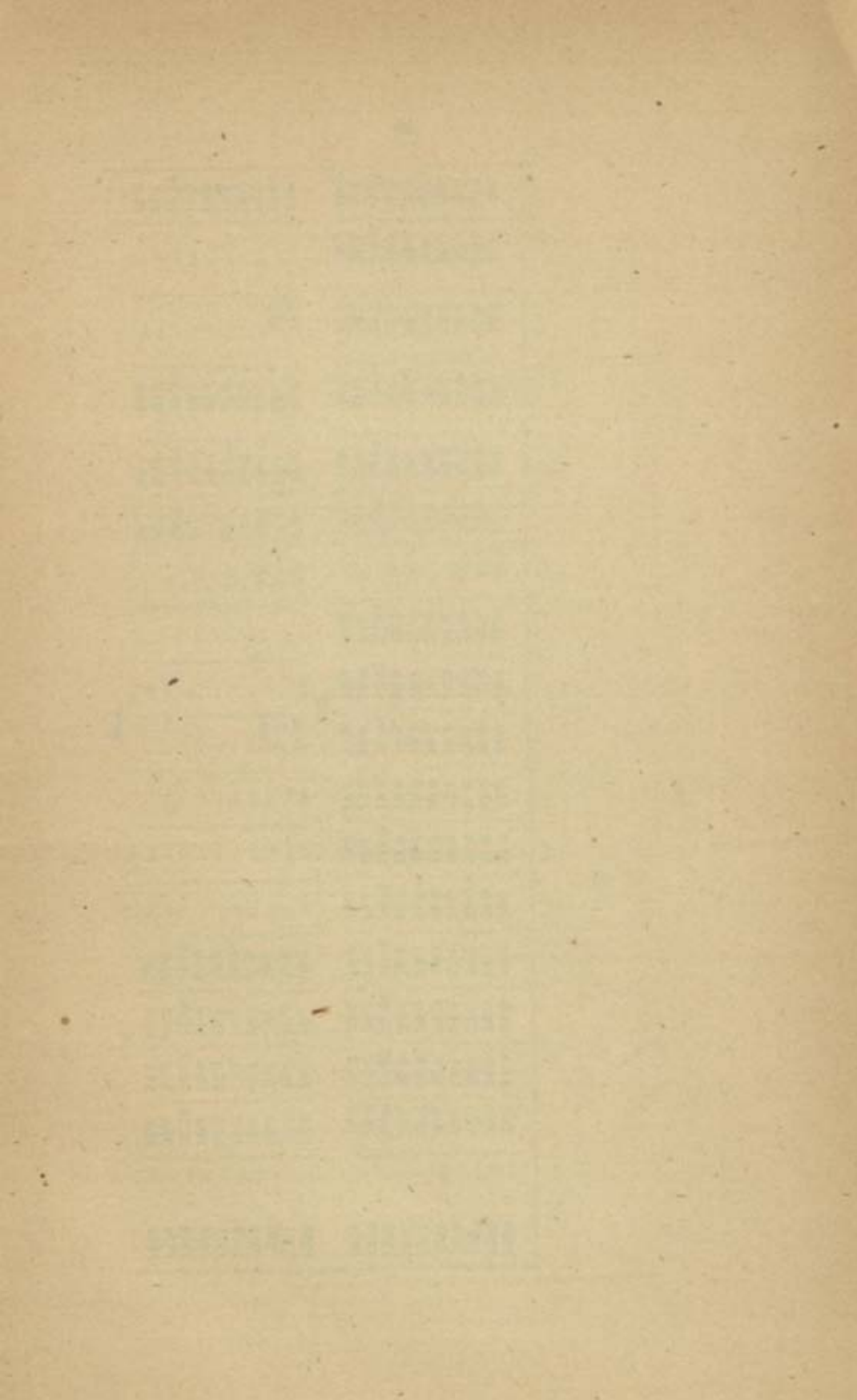
raddy (second sort).

1313	...	257	...	240	218	206	211	203	...	251	...	264	244	205	309	228	236
1314	...	234	188	218	193	244	201	201	...	253	...	210	202	196	192	202	211
1315	...	1841	1786	1863	1502	1730	1977	1977	...	1822	...	1586	1630	1630	1478	1732	1738
1316	...	146	150	185	184	183	...	178	...	183	...	149	159	152	183	167	156
1317	...	145	142	147	129	132	...	160	...	161	...	149	148	131	185	161	148
1318	...	145	129	127	117	125	...	123	...	126	...	125	122	112	117	111	127
1319	...	170	175	161	164	161	...	157	...	153	...	138	153	152	141	129	154
1320	...	190	185	162	170	173	...	188	...	145	...	160	153	151	199	162	168
1321	...	155	150	150	140	146	...	166	...	141	...	156	153	126	135	143	146
1322	...	121	129	116	124	131	...	131	...	109	...	135	117	111	131	136	126
Horsegram.																	
1313	...	237	219	237	222	202	233	246	...	217	...	272	248	250	206	291	230
1314	...	226	224	222	226	202	247	221	...	222	...	250	209	237	200	213	224
1315	...	1301	1244	1250	1198	1306	1209	1640	...	1272	...	1402	1271	1277	1185	1324	1300
1316	...	128	127	138	124	106	...	166	...	126	...	129	133	137	120	120	129
1317	...	160	146	164	153	130	...	179	...	139	...	147	154	158	194	153	156
1318	...	134	130	141	129	133	...	125	...	124	...	147	127	140	125	142	134
1319	...	114	107	119	110	108	103	...	120	117	125	104	114	113
1320	...	155	145	155	152	135	...	167	...	121	...	143	146	144	126	114	138
1321	...	179	173	187	168	159	...	178	...	143	...	148	171	167	150	...	169
1322	...	159	164	160	158	152	...	177	...	147	...	183	160	173	144	...	160
Cholam.																	
1313	...	284	...	287	262	282	276	260	269	220	...	305	246	281	205	218	289
1314	283	184	223	178	193	222	171	...	210	185	198	176	183	196
1315	...	1560	...	1606	1557	1557	1611	2030	1906	1269	...	1620	1562	1665	1337	1484	1603
1316	...	149	...	153	156	117	...	157	187	126	...	160	149	163	126	116	151
1317	...	144	...	131	140	113	...	129	145	117	...	127	129	137	124	122	135
1318	...	126	...	122	122	117	...	118	110	102	...	106	119	135	110	114	117
1319	...	154	156	142	151	131	...	121	131	106	...	122	145	173	126	118	136
1320	...	166	146	147	161	132	...	126	144	132	...	133	147	168	128	94	138
1321	...	135	127	166	144	128	...	117	135	114	...	146	131	147	128	111	131
1322	...	111	121	125	121	114	...	117	123	103	...	123	119	126	105	100	112

XVIII.—Prices in seers per rupee—cont.

Paali.	Narasapur Division.			Bezwada Division.			Gudivada Division.		Elore Division.			Masulipatam Division.		(18) District Average.			
	(2) Narasapur Taluk.	(3) Bhimavaram Taluk.	(4) Tanuku Taluk.	(5) Bezwada Taluk.	(6) Nandigama Taluk.	(7) Nandigama Taluk.	(8) Nandigama Taluk.	(9) Nuzvid.	(10) Tiruvur Division.	(11) Gudivada Taluk.	(12) Kalkur Taluk.	(13) Chintalapudi.	(14) Elore Taluk.		(15) Talapudi (Kovvur).	(16) Bandar Taluk.	(17) Divi Taluk.
1313	337	291	312	279	305
1314	204	170	258	199	220
1315	1666	1709	1459	1605	1614
1316	174	175	147	144	156
1317	158	122	138	136	149
1318	130	141	128	129	132
1319	134	134	121	158	187
1320	152	159	168	198	163	197	173
1321	134	134	124	154	173	146	144
1322	120	120	120	151	100	162	161	133

Cumbu.



Rays.

1313	252	244	272	257	29.1	27.1	27.0	...	20.5
1314	222	213	209	212	20.6	20.9	20.2	...	21.1
1315	1678	1633	1546	1585	16.46	16.10	15.92	...	16.13
1316	148	144	158	150	15.5	15.8	15.5	...	15.3
1317	125	128	129	132	11.9	13.0	13.2	...	12.8
1318	11.9	12.2	11.1	12.5	10.9	12.2	11.2	...	11.7
1319	15.6	15.2	14.8	15.7	11.8	14.4	16.8	...	14.9
1320	15.8	18.5	17.1	18.1	...	19.8	19.8	14.0	18.1	18.2	...	17.7
1321	132	138	139	145	...	17.2	11.4	13.9	14.1	14.5	...	14.0
1322	134	136	121	121	...	13.3	10.1	14.9	13.3	12.4	...	12.8

Salt.

1313	187	145	152	145	141	158	147	148	13.9	14.3	14.8	14.9	15.6	14.7	14.6
1314	149	144	169	146	151	151	145	150	14.4	14.3	15.7	16.0	16.9	15.5	15.2
1315	1600	1833	1782	1600	1617	1706	1585	1750	15.57	...	16.02	17.93	20.25	18.00	17.21
1316	187	204	200	19.7	19.5	17.8	16.8	18.3	16.9	...	16.8	20.0	22.5	18.7	19.0
1317	21.3	23.4	24.0	24.0	24.0	21.3	19.2	19.2	19.1	...	19.2	23.7	25.4	24.0	22.2
1318	22.7	23.3	24.0	24.0	24.0	21.3	20.9	19.2	18.0	...	19.2	24.0	27.0	24.0	22.5
1319	23.0	24.0	24.0	24.0	24.0	21.3	21.1	19.2	18.2	...	19.2	24.0	27.0	24.0	22.7
1320	25.1	24.0	24.0	24.0	24.0	21.3	21.6	22.7	19.5	...	21.6	24.0	27.0	24.0	23.0
1321	23.5	24.0	24.0	24.0	24.0	21.3	21.6	23.8	19.2	...	21.6	24.0	27.0	24.0	22.9
1322	23.5	24.0	24.0	24.0	24.0	21.3	21.6	24.0	19.2	...	21.6	24.0	27.0	24.0	22.9

No.	Name	Age	Sex	Profession	Religion	Marital Status	Education	Income	Assets	Liabilities	Remarks
1	John Doe	35	M	Teacher	Christian	Married	High School	\$1000	House	None	
2	Jane Smith	28	F	Nurse	Catholic	Single	College	\$800	None	None	
3	Robert Brown	45	M	Farmer	Protestant	Married	High School	\$1200	Land	None	
4	Mary White	60	F	Homemaker	Methodist	Widowed	Elementary	\$600	None	None	
5	James Black	50	M	Businessman	Jewish	Married	College	\$1500	Stocks	None	
6	Elizabeth Green	30	F	Doctor	Muslim	Single	Medical School	\$900	None	None	
7	William Grey	70	M	Retired	Buddhist	Widowed	High School	\$700	Pension	None	
8	Anna King	40	F	Accountant	Hindu	Married	College	\$1100	None	None	
9	Charles Lee	25	M	Student	Sikh	Single	University	\$500	None	None	
10	Sarah Hall	55	F	Manager	Other	Married	College	\$1300	None	None	

BEZWADA DIVISION.		185	4,116	59	2,282	115	12,869	359	19,267	53	10	8	0	2	5	130	19-23
Bezawada.	{ 1908-09 ...	183	4,052	61	2,338	118	12,544	362	18,934	52	0	5	0	2	5	124	51-61
	{ 1909-10 ...	161	3,708	64	2,464	119	12,695	344	18,867	54	13	5	0	2	5	78	10-66
	{ 1910-11 ...	157	3,620	66	2,555	117	12,261	340	18,439	54	3	8	0	2	0	75	26-63
	{ 1911-12 ...	159	3,698	69	2,667	116	12,460	344	18,804	54	3	0	0	2	0	81	39-51
Nandigama.	{ 1908-09 ...	107	2,452	45	1,743	31	4,154	183	8,349	45	9	11	0	0	11	23	13
	{ 1909-10 ...	100	2,376	50	1,943	37	4,718	187	9,040	48	5	5	0	1	0	45	20
	{ 1910-11 ...	104	2,472	56	2,170	38	4,814	198	9,456	47	12	1	0	1	0	49	26
	{ 1911-12 ...	100	2,248	53	1,942	42	6,328	195	10,518	53	15	0	0	1	0	45	20
Nasvid.	{ 1912-13 ...	103	2,314	49	1,819	40	5,155	192	9,288	48	5	11	0	0	11	45	8
	{ 1908-09 ...	196	4,440	57	2,205	65	6,356	318	13,001	40	13	3	0	1	1	52	5-75
	{ 1909-10 ...	180	4,168	78	3,017	60	6,475	318	12,660	39	12	9	0	1	0	84	9-52
	{ 1910-11 ...	123	2,884	69	2,702	28	3,208	220	8,794	39	15	6	0	0	10	63	9-52
Tiruvur.	{ 1911-12 ...	107	2,508	78	3,088	42	4,612	227	10,158	44	11	10	0	1	0	84	36-9
	{ 1912-13 ...	101	2,374	75	2,917	41	5,352	217	10,643	49	0	7	0	1	1	59	16-94
	{ 1908-09 ...	68	1,530	35	1,344	39	2,990	142	5,564	41	5	4	0	1	4	66	11-7
	{ 1909-10 ...	58	1,365	43	1,552	42	3,771	143	6,788	47	7	6	0	1	6	82	28
Gudivada.	{ 1910-11 ...	59	1,403	46	1,785	34	2,618	139	5,806	41	12	3	0	1	4	65	35
	{ 1911-12 ...	55	1,268	43	1,666	33	2,533	131	5,467	41	11	9	0	1	1	55	12-36
	{ 1912-13 ...	59	1,388	41	1,589	31	2,344	131	5,321	40	9	10	0	1	1	52	23
	{ 1908-09 ...	99	2,204	42	1,631	35	4,422	176	8,257	46	14	7	0	0	8	66	16-6
Gudivada.	{ 1909-10 ...	86	1,968	44	1,743	45	6,169	175	9,880	56	7	3	0	0	9	46	13
	{ 1910-11 ...	83	1,894	42	1,855	61	7,355	186	10,814	58	2	3	0	1	2	46	13
	{ 1911-12 ...	107	2,500	49	1,897	63	7,789	219	12,186	51	1	3	0	1	2	44	37-5
	{ 1912-13 ...	100	2,280	67	2,604	67	8,682	234	13,666	57	15	7	0	1	4	81	30-5

Note.—The figures reported against Gudivada taluk for 1908-09 and 1909-10 are for the taluk as it stood then. With effect from 1st November 1910, the old Gudivada taluk was divided into Kalkur and Gudivada taluks.

MABULIPATAN DIVISION.

Bandar ...	{ 1908-09 ...	55	1,292	61	2,436	99	14,075	215	17,803	82	12	1	0	3	9	87	26.43
	{ 1909-10 ...	70	1,744	59	2,317	94	13,000	229	17,061	74	8	0	0	2	7	108	20
	{ 1910-11 ...	64	1,432	54	2,058	112	13,338	230	16,863	73	5	1	0	2	7	93	13
	{ 1911-12 ..	74	1,648	41	1,746	118	14,163	233	17,456	74	14	8	0	2	5	100	20
	{ 1912-13 ...	75	1,652	51	2,005	119	14,673	245	18,390	75	1	0	0	2	6	122	28
Divi ...	{ 1908-09 ...	58	1,273	26	1,015	10	1,422	94	3,710	39	7	5	0	0	6	45	2
	{ 1909-10 ...	62	1,348	29	1,127	10	1,488	101	3,963	39	3	9	0	0	6	38	13
	{ 1910-11 ...	67	1,452	21	819	11	1,411	99	3,682	39	3	5	0	0	6	25	8
	{ 1911-12 ..	71	1,347	23	806	12	1,629	106	3,912	36	10	10	0	0	5	23	..
	{ 1912-13 ...	82	1,816	26	994	18	2,177	126	4,987	39	9	3	0	0	7	59	..
District Total.	{ 1908-09 ...	1,249	27,325	612	23,596	692	84,349	2,553	130,270	53	6	0	0	1	1	937	9.21
	{ 1909-10 ...	1,264	28,745	639	24,710	705	83,536	2,608	136,991	52	8	4	0	1	1	1,005	15.86
	{ 1910-11 ...	1,168	26,677	647	24,052	703	83,264	2,618	134,893	53	9	2	0	1	1	887	14.62
	{ 1911-12 ..	1,164	26,447	649	25,140	728	89,236	2,541	140,783	55	9	6	0	1	2	896	16.33
	{ 1912-13 ...	1,145	26,104	690	26,799	739	94,262	2,604	147,165	56	8	3	0	1	2	946	18.13

XX.—Abkari and Opium.

(1)	1904-05.	1905-06.	1906-07.	1907-08.	1908-09.	1909-10.	1910-11.	1911-12.	1912-13.
	(2)	(3)	(4)	(5)	(6)	(7)	(8)	(9)	(10)
Country spirits.									
Number of retail shops licensed
Quantity sold in seers	64,650	73,510	103,847	127,813	130,358	154,040	107,513	111,322	118,574
Number of persons per retail shop	2,007	2,122	2,059	2,057	2,057	2,439	2,537	2,574	3,005
Gross receipts from duty	Rs. 2,73,146	3,18,059	4,48,403	6,22,718	7,85,668	6,79,254	5,07,964	6,13,302	6,40,123
Do, rentals	1,63,343	1,45,097	1,56,442	1,91,977	3,17,798	4,43,328	3,19,795	2,69,766	2,75,088
Toddy.									
Number of retail shops licensed	1,300	1,353	1,509	1,283	1,271	1,139	1,140	1,106	911
Quantity sold in seers	1,384	1,381	1,354	1,350	1,372	1,331	1,751	1,806	2,103
Number of persons per shop	3,17,393	3,20,011	3,77,207	4,61,476	5,69,184	6,64,631	4,49,947	4,59,782	4,74,763
Gross receipts from tree-tax	Rs. 3,30,945	2,98,845	2,83,328	2,86,250	3,25,710	3,54,854	3,40,344	3,17,073	3,33,656
Do, rentals
Ganja, Zhang.									
Number of retail shops licensed	28	28	28	28	28	28	27	25	24
Quantity sold in seers	1,213	1,273	1,303	1,428	1,512	1,434	1,458	1,669	1,621
Number of persons per shop	62,591	63,491	62,291	62,291	62,291	62,291	73,946	79,001	83,290
Gross receipts from duty	Rs. 5,688	3,111	5,110	5,435	6,704	6,107	4,840	9,489	10,110
Do, rentals	7,133	8,637	8,646	8,771	10,985	13,191	13,647	9,669	12,516
Opium.									
Number of retail shops licensed	129	137	143	143	141	122	117	110	106
Quantity sold in seers	5,300	5,251	5,079	6,794	8,378	6,613	6,010	5,977	5,969
Number of persons per shop	10,963	11,169	13,197	12,197	12,370	14,296	17,954	18,180	19,094
Gross receipts from duty	Rs. 128	135	35,102	46	6,663	50,191	1,21,873	1,29,716	1,50,010
Do, rentals	48,727	30,837	50,529	59,227	87,451	97,238	61,508

NOTE.—The territorial limits of the district were revised in 1904. Hence figures have been given from 1904-05 onwards.

XXI.—Revenue Receipts.

(1)	1904-05.	1905-06.	1906-07.	1907-08.	1908-09.	1909-10.	1910-11.	1911-12.	1912-13.
	RS.	RS.	RS.	RS.	RS.	RS.	RS.	RS.	RS.
Land Revenue and rates (a) ...	61,67,723	62,96,802	66,21,134	67,58,622	62,42,439	64,81,447	63,82,104	66,07,583	67,56,863
Stamps ...	5,02,509	5,41,908	5,28,702	5,62,153	5,91,635	6,57,600	6,82,343	7,89,360	8,70,831
Excise ...	10,86,432	11,02,394	12,87,347	15,98,363	19,05,444	20,21,293	17,48,931	16,84,701	17,68,135
Income-tax, including penalties ...	1,14,951	1,21,325	1,37,281	1,41,183	1,51,057	1,44,495	1,51,644	1,44,058	1,82,974
Forests (b) ...	80,773	76,204	77,510	1,06,307	87,765	1,16,557	1,16,340	1,18,066	95,138
Registration (c) ...	72,561	74,843	83,530	95,879	94,461	98,175	98,823	1,04,522	1,23,432
Opium ...	49,005	40,187	38,357	43,666	57,137	1,15,418	1,78,824	1,77,954	2,11,948
Salt (d) ...	5,20,251	6,35,492	5,64,759	5,09,222	3,73,822	4,30,467	3,48,301	3,35,478	3,11,718
Customs ...	78,225	69,214	73,847	1,08,579	64,070	73,074	65,459	81,239	43,939

NORW.—The territorial limits of the district were revised in 1904. Hence figures have been given from 1904-05 onwards.

(a) The figures from 1908-09 onwards do not include rates.

(b) The figures under Forests relate to Fall years.

(c) The figures under Registration relate to the Calendar years.

(d) The figures are for Manipalman Sub-Division.

XXII.—Sea-borne Trade—Total trade in each port.

Names of ports.	Imports.						Exports.				
	1908-09. (2)	1909-10. (3)	1910-11. (4)	1911-12. (5)	1912-13. (6)	1908-09. (7)	1909-10. (8)	1910-11. (9)	1911 12. (10)	1912-13. (11)	
MARULIPATAM.											
Merchandise	11,28,777	8,78,688	4,35,086	3,56,614	2,25,084	15,50,430	15,42,675	8,63,247	14,27,142	10,58,001	
Treasure	
Total	11,28,777	8,78,688	4,35,086	3,56,614	2,25,084	15,50,430	15,42,675	8,63,247	14,27,142	10,58,001	
MINOR PORT—NARABAPUR.											
Merchandise	625	829	..	879	..	39,016	26,671	2,098	2,360	
Treasure	
Total	625	829	..	879	..	39,016	26,671	2,098	2,360	

XXII-A.—Sea-borne Trade—Chief Imports and Exports at selected ports.

(Average of the five years ending 1912-13.)

Name of port.	Imports.			Name of port.	Exports.			
	Articles.	Quantity.	Value.		Articles.	Quantity.	Value.	
Mausulipatam.	Textiles—Cotton-twist and yarn	lbs.	Mausulipatam.	Grain and Pulse—		Rs.	
	Piece-goods—				Pulse	cwt.	67,208
	Grey	1,982,459	yds.		Rice in the husk	"	6,44,853
	White	98,888	"		Rice not in the husk	"	3,48,900
	Coloured	53,162	"		Seeds—Essential	"	51,153
	Jute—gunny bags	126,305	No.		Sesamum (Til or gingly)	"	50,897
	Wood and Timber—Teak wood	657	tons.		Other kinds	"	4,370
	All other articles	val.		Spices—Chillies	lbs.	18,400
					All other articles	val.	1,02,638
	Total			Total		12,88,419
		6,04,856						

XXIII.—Income and Expenditure of Local Boards in 1912-13.

	District Board.	Taluk Boards including Unions in them.					Total.
		Narsapur.	Bezawada.	Guduvada.	Ellore.	Bandar.	
(1)	(2)	(3)	(4)	(5)	(6)	(7)	(8)
REVENUE AND RECEIPTS.	RS.	RS.	RS.	RS.	RS.	RS.	RS.
Land Revenue—							
House-tax	18,174	14,732	4,544	5,069	3,661	46,170
Rents, etc., of fisheries ...	*57	941	17	1,721	179	153	3,068
Miscellaneous	*51	982	420	346	345	110	2,254
Local rates—							
Cess on land	3,05,433	1,18,035	73,577	35,315	42,334	36,151	6,10,865
Railway cess	1,52,716	1,52,716
Interest—							
On Government securities, etc.	28,501	97	2	120	12	24	28,980
Law and Justice—Courts of Law—							
Fines under Police and other Acts.	28	698	787	164	335	230	2,152
Education—							
School fees	35,332	2,702	7,361	2,455	1,066	48,856
Contributions	2,280	28,115	19,537	11,089	18,738	9,500	80,259
Other receipts	1	384	...	2	...	17	404
Medical—							
Hospital receipts	10	10	20
Contributions	476	784	1,895	294	250	92	3,791
Other receipts	47	2,107	965	198	234	50	3,601
Minor Departments—							
Veterinary, etc., receipts ...	32	32
Miscellaneous—							
Choultry receipts	81	324	300	...	356	961
Market and slaughter-house receipts.	...	12,843	370	405	414	151	14,183
Contributions	2,430	2,430
Other receipts	*5,795	2,030	370	307	401	354	9,347
Railways—							
Net receipts	1,84,154	1,84,154
Civil Works—							
Ferry receipts	13,029	13,029
Tolls	49,407	49,407
Contributions—							
Contributions from Government.	1,36,411	9,793	21,867	8,375	27,827	8,085	2,34,813 †
Other contributions	30,417	4,898	1,011	372	929	430	28,115 ‡
Debt, deposit and advances.	27,469	2,342	7	309	167	240	30,434
Capital account of the Local Boards.	72,591	72,591
Total Receipts ...	10,18,995	2,37,256	1,41,013	71,072	99,079	60,894	16,31,722 †

* Collector's figures.

† Includes Rs. 2,455 for which details are not available.

‡ Includes Rs. 358 for which details are not available.

XXIII.—Income and Expenditure of Local Boards in 1912-13—cont.

(1)	District Board.	Taluk Boards including Unions in them.					Total.
		Narsapur.	Bezawada.	Guduvada.	Ellore.	Randar.	
(1)	(2)	(3)	(4)	(5)	(6)	(7)	(8)
EXPENDITURE.	RS.	RS.	RS.	RS.	RS.	RS.	RS.
Refunds—							
Land revenue and local rates.	42	19	38	61	12	12	184
Interest—							
On loans, etc.
General administration—							
General establishment of local funds.	* 3,406	3,927	4,161	2,399	1,875	1,683	17,449
Other expenditure ...	* 8,996	3,079	...	404	1,983	421	14,879
Education—							
Secondary schools	16,940	...	3,454	20,394
Elementary schools	58,184	26,356	19,745	22,578	15,609	1,42,532
Other schools ...	1,326	1,326
Other expenditure ...	3,491	168	...	74	546	18	4,297
Medical—							
Hospitals and dispensaries.	6,156	12,787	13,362	4,751	5,403	2,806	45,835
Vaccination ...	2,364	2,536	2,648	791	1,631	974	19,944
Sanitation	9,830	7,748	1,968	2,373	1,637	23,856
Plague ...	5,732	5,732
Other epidemics ...	824	700	138	54	148	110	1,534
Other expenditure ...	112	6	1	...	6	...	125
Minor departments—							
Public exhibition and fairs.
Veterinary and other charges.	1,482	1,482
Superannuation, etc.—							
Pensions, gratuities, etc. ...	8,128	79	72	...	48	...	8,327
Stationery and Printing—							
Stationery supplied from central stores.	786	167	43	43	—3	97	1,133
Printing work at Government and private presses.	1,388	612	359	244	485	339	3,430
Miscellaneous—							
Markets and slaughter-houses.	...	1,580	4	...	1,584
Choultrys	1,141	639	214	350	193	2,537
Lighting	1,041	1,981	666	246	126	4,640
Other expenditure ...	168	313	16	29	124	14	744
Railways—							
Construction of railways ...	9,724	9,724
Other expenditure ...	1,63,666	1,63,666
Civil Works—							
Civil buildings ...	15,489	8,159	6,248	4,729	5,669	3,153	43,438
Communications ...	* 3,90,169	53,292	41,536	14,894	12,624	16,681	4,30,196
* Sanitary works and other works of public improvements.	*—5,725	19,922	15,333	8,213	19,248	7,766	64,757
Establishment, Tools and plant.	53,672	8,396	8,517	3,552	3,560	2,599	80,286
Contributions ...	1,925	1,633	...	2,658
Other expenditure	4,297
Debt, deposit and advances.	2,46,467	1,560	8	769	84	361	2,49,239
Total Expenditure ...	8,88,498	2,65,694	1,29,854	67,615	80,568	48,659	14,23,864

* Collector's figures.

† Details are not available.

XXIV.—Income and Expenditure of Municipalities in
1912-13.

— (1)	Bezwada. (2)	Masulipatam. (3)	Ellore. (4)
	Rs.	Rs.	Rs.
Opening balance	42,471	25,845	11,691
RECEIPTS.			
Tax on buildings and lands	24,297	21,711	20,535
Water and drainage tax on buildings and lands	23,905	5,111	17,292
Tax on vehicles with springs, animals and carts	4,511	6,026	6,381
Tax on arts	6,641	5,959	4,590
Tolls	14,561	12,204	13,014
Tax on private, menial and domestic servants
Realizations under special Acts	1,219	128	160
Rent of lands, buildings, etc., and sale-proceeds of lands, etc.	9,268	784	1,600
Conservancy receipts	58	1,414	1,735
Fees and revenue from—			
Educational institutions	146
Medical institutions	181	399	156
Markets and slaughter-houses	5,131	12,561	6,047
License fees	1,764	2,634	3,493
Other fees	1,143	1,015	61
Fines under Municipal and other Acts	885	1,220	1,147
Interest on investments and premium on loans
Grants and contributions from—			
Government	17,318	32,107	1,83,747
Local Boards	3,139	3,834	2,250
Other sources
Recoveries for services rendered to private individuals			
Miscellaneous	3,721	1,414	2,607
Sale-proceeds of Government securities and realizations of sinking funds	435	280	194
Loans
Advances recovered	151	...	37
Total Receipts ..	1,18,474	1,08,801	2,65,046
Total including balance ...	1,60,945	1,34,646	2,76,737
EXPENDITURE.			
GRANT 1—			
Communications	16,628	11,467	12,271
Buildings	7,354	14,193	1,061
Miscellaneous public improvements	476	31,107	1,12,950

XXIV.—Income and Expenditure of Municipalities in
1912-13—cont.

— (1)	Berwada. (2)	Masulipatam. (3)	Ellore. (4)
EXPENDITURE—cont.	RS.	RS.	RS.
Grant 1—cont.			
Drainage	1,927	217	693
Water-supply	21,318	2,704	398
Establishment	1,279	1,996	1,938
Tools and plant and other stores	100	77	82
Contributions for public works	860	1,864	...
Grant 2—			
Education	8,134	7,450	6,126
Grant 3—			
Hospitals and dispensaries	6,370	7,252	7,312
Vaccination	364	454	418
Registration of births and deaths	205	715	259
Conservancy, road-cleaning and road-watering	20,354	16,665	13,120
Contributions	82	106	...
Plague charges	2,188	571	711
Veterinary charges
Grant 4—			
Lighting	4,217	3,833	4,080
Markets and slaughter-houses	268	555	614
Choultries and travellers' bungalows	543	171	110
Avenues	516	181	228
Public garden, survey of land, fire, pounds and other charges	9,253	2,884	3,796
Grant 5—			
Supervision and management	4,620	6,913	3,807
Repayment of debt	4,722
Interest on debt	4,476
Discount on investment
Advances	14	...	69
Refunds	19	85	2
Investments
Total Expenditure ...	1,16,287	1,11,360	1,70,645
Closing balance ...	44,658	23,286	1,06,092
Total including balance ...	1,60,945	1,34,646	2,76,737

XXV—Education in 1911.

Taluka.	Number of literates.		Literates per thousand of population.		Literates in English.	
	Males.	Females.	Males.	Females.	Males.	Females.
(1)	(2)	(3)	(4)	(5)	(6)	(7)
NARASAPUR DIVISION.						
Narasapur	10,176	1,702	125	19	1,155	16
Bhimavaram	9,230	1,401	114	16	706	18
Tanuku	15,699	1,878	120	14	1,478	23
BEZWADA DIVISION.						
Bezwada	9,699	1,314	129	18	1,287	131
Nandigama	8,142	534	102	7	247	36
Narvid	11,208	1,518	136	19	672	15
Tiruvur	2,487	157	61	4	80	...
GUDIVADA DIVISION.						
Gudivada	7,590	1,212	93	15	657	16
Kaikalur	2,516	244	77	8	152	6
ELLORE DIVISION.						
Ellore	12,266	1,979	117	19	1,398	60
Yernagudem	6,130	737	76	9	299	5
MASULIPATAM DIVISION.						
Bandar	11,546	2,958	201	51	2,896	258
Divi	5,573	565	82	9	319	9
District Total	112,262	16,199	113	16	11,296	592
Hindus	103,568	13,166	111	14	9,909	154
Muslims	5,210	1,160	146	33	629	13
Christians	3,460	1,867	188	75	747	419
Others	24	6	32	8	11	2

XXVI.—Schools and Scholars on the 31st March 1913.

Class of institutions.	Number of institutions.							Number of scholars.		
	Government.	Municipal.	Local Fund.	Native States.	Aided.	Unaided.	Total.	Males.	Females.	Total.
(1)	(2)	(3)	(4)	(5)	(6)	(7)	(8)	(9)	(10)	(11)
PUBLIC										
Arts Colleges	1	...	1	207	...	207
Professional Colleges.
a { Secondary schools	6	...	11	4	21	6,341	51	6,392
	Do. do.	2	1	3	31	174	205
b { Higher Elementary schools for
	boys	8	...	3	1	12	1,477	97	1,574
Do. do.	7	1	...	5	1	14	...	2,042	2,042	
c { Lower Elementary schools
	for boys ...	49	521	...	994	373	1,937	40,496	16,206	65,702
Do. do.	11	...	14	...	43	9	77	71	4,561	4,632
Training schools for	3	..	1	...	4	169	...	169
Do. do.
Other special schools.	1	1	16	5	21
Total ...	18	49	553	...	1,060	390	2,070	57,808	23,186	80,944
PRIVATE.										
Advanced	15	286	2	288
Elementary	165	2,764	283	3,047
Total	180	3,050	285	3,335
Grand Total ...	18	49	553	...	1,060	390	2,250	60,858	23,421	84,279

(a) Includes European High and Middle schools.

(b) Relates to Elementary schools with standards above the fourth.

(c) Relates to Elementary schools with standards up to and including the fourth. Elementary schools with standards below the fourth and European Primary schools.

STATE OF ALABAMA

Name of Corporation	Capital		Assets		Liabilities		Date of Report
	Authorized	Paid-up	Real Estate	Personal Property	Accounts Payable	Other	
Alabama Bank & Trust Co.	1,000,000	750,000	500,000	200,000	200,000	100,000	12-31-1917
First National Bank of Alabama	500,000	400,000	200,000	150,000	100,000	50,000	12-31-1917
State Bank of Alabama	1,500,000	1,200,000	600,000	300,000	400,000	200,000	12-31-1917
Alabama Trust Co.	200,000	150,000	80,000	40,000	50,000	20,000	12-31-1917
Alabama Savings Bank	750,000	600,000	300,000	150,000	150,000	70,000	12-31-1917
Alabama Bank	300,000	250,000	120,000	60,000	80,000	40,000	12-31-1917
Alabama Bank	100,000	80,000	40,000	20,000	30,000	10,000	12-31-1917
Alabama Bank	50,000	40,000	20,000	10,000	15,000	5,000	12-31-1917
Alabama Bank	25,000	20,000	10,000	5,000	7,500	2,500	12-31-1917

XXVIII.—Hospitals and Dispensaries in 1912.

Name of hospital or dispensary.	(1)	(2)	In-patients.				Out-patients.				(13)	(14)		
			Whether Govern-ment, Local or Pri- vate.		Number of beds available for		Daily average number treated		Average daily attendance,					
			Men.	Women.	Men.	Women.	Child- ren.	Total.	Men.	Women.			Child- ren.	Total.
Achanta	2	1	1.42	0.02	...	27.98	11.36	1.42	53.76	8,332	1,653	
Avanigadda	...	Local Fund.	36.99	9.16	9.80	55.95	12,453	2,763	
Boxwada	...	Municipal.	24	23	11.50	4.10	0.54	10.14	87.63	84.26	27.23	149.02	24,653	9,064
Bhimavaram	...	Local Fund.	3	2	1.49	0.57	0.12	2.18	37.06	10.21	11.04	58.91	13,876	2,094
Chintalapudi	...	Do.	20.70	6.81	8.06	35.57	6,681	1,394	
Ellore	...	Municipal.	12	12	7.45	5.23	0.58	13.26	126.69	91.60	51.28	269.47	31,984	9,954
Gannavaram	...	Local Fund.	21.63	8.26	8.66	38.45	6,725	3,875	
Gadivada	...	Do.	4	4	2.22	0.67	0.10	2.99	62.80	20.30	15.53	68.63	19,366	5,519
Jaggayyapeta	...	Do.	4	4	2.01	0.38	0.02	2.41	23.32	13.80	18.42	60.54	9,168	2,531
Kaitalur	...	Do.	18.85	8.30	7.39	34.54	6,688	1,628	
Kovvur	...	Do.	26.44	8.92	11.39	46.65	7,449	9,182	
Masulipatam	...	Municipal.	24	10	16.85	6.19	1.18	24.22	43.38	13.29	11.13	67.80	25,377	10,325
" Women and Children's dispensary.	...	Do.	39.00	31.00	70.00	9,484	1,993	
Mailavaram	...	Local Fund.	25.53	7.30	8.57	41.40	7,050	2,843	
Nandigama	...	Do	4	4	0.14	0.07	0.01	0.22	11.04	3.83	4.95	19.52	5,531	2,816
Narsapur	...	Do.	8	4	2.45	0.96	0.08	3.50	58.41	21.18	14.81	94.40	31,011	8,887
Nidadavolu	...	Do.	24.11	9.38	9.31	42.80	10,313	1,545	
Nuzvid	...	Do.	58.24	29.45	30.67	118.36	14,848	3,664	
Pentapad	...	Do.	30.45	13.09	13.75	57.19	10,746	2,028	
Tannuku	...	Do.	4	2	3.88	0.73	0.01	4.62	61.76	26.49	25.07	111.32	20,118	3,720
Tiruvur	...	Do.	6	2	0.70	0.20	0.02	0.92	28.55	10.71	15.77	55.03	10,646	1,378
District Total	...		95	68	50.12	19.12	2.67	71.91	836.96	337.60	344.75	1,579.31	282,508	83,656

XXIX.—Vaccination.

Taluks and Municipalities.	Number of persons successfully vaccinated.			Registered birth rate per 1,000 of population.			Average number of successful cases of vaccination on children under one year during the three years ending 1912-13.
	1910-11.	1911-12.	1912-13.	1910.	1911.	1912.	
(1)	(2)	(3)	(4)	(5)	(6)	(7)	(8)
NARASAPUR DIVISION.							
Narasapur	4,817	4,903	5,558	28	24	28	1,779
Bhimavaram	3,830	4,760	5,056	31	31	37	1,662
Tanuku	6,372	7,279	7,982	36	35	38	2,724
BEZWADA DIVISION.							
Bezwada	4,792	4,857	4,885	44	36	39	2,120
Nandigama	4,451	4,427	4,469	39	37	42	1,330
Nuvvid	7,252	7,591	7,910	34	35	36	3,199
Tiruvur	3,034	3,364	3,623	43	34	34	2,017
GUDIVADA DIVISION.							
Gudivada	4,917	4,464	4,983	37	25	28	1,881
Kaikalur	1,453	1,408	2,150	..	30	34	581
ELLORE DIVISION.							
Ellore	6,532	6,708	7,609	23	25	23	2,415
Yernagudem	4,431	4,784	4,954	37	35	35	1,459
MASULIPATAM DIVISION.							
Bandar	3,456	3,151	3,385	30	32	32	965
Divi	4,090	3,346	4,183	46	32	34	1,646
MUNICIPALITIES.							
Masulipatam	1,265	1,515	1,650	32	33	32	893
Bezwada	1,036	1,107	1,162	34	32	35	826
Ellore	1,800	2,255	2,378	37	42	47	1,335
District Total	63,588	65,919	71,917	34	32	34	26,832

XXX.—Civil Justice.

(Average of the statistics for the years 1905—12.)

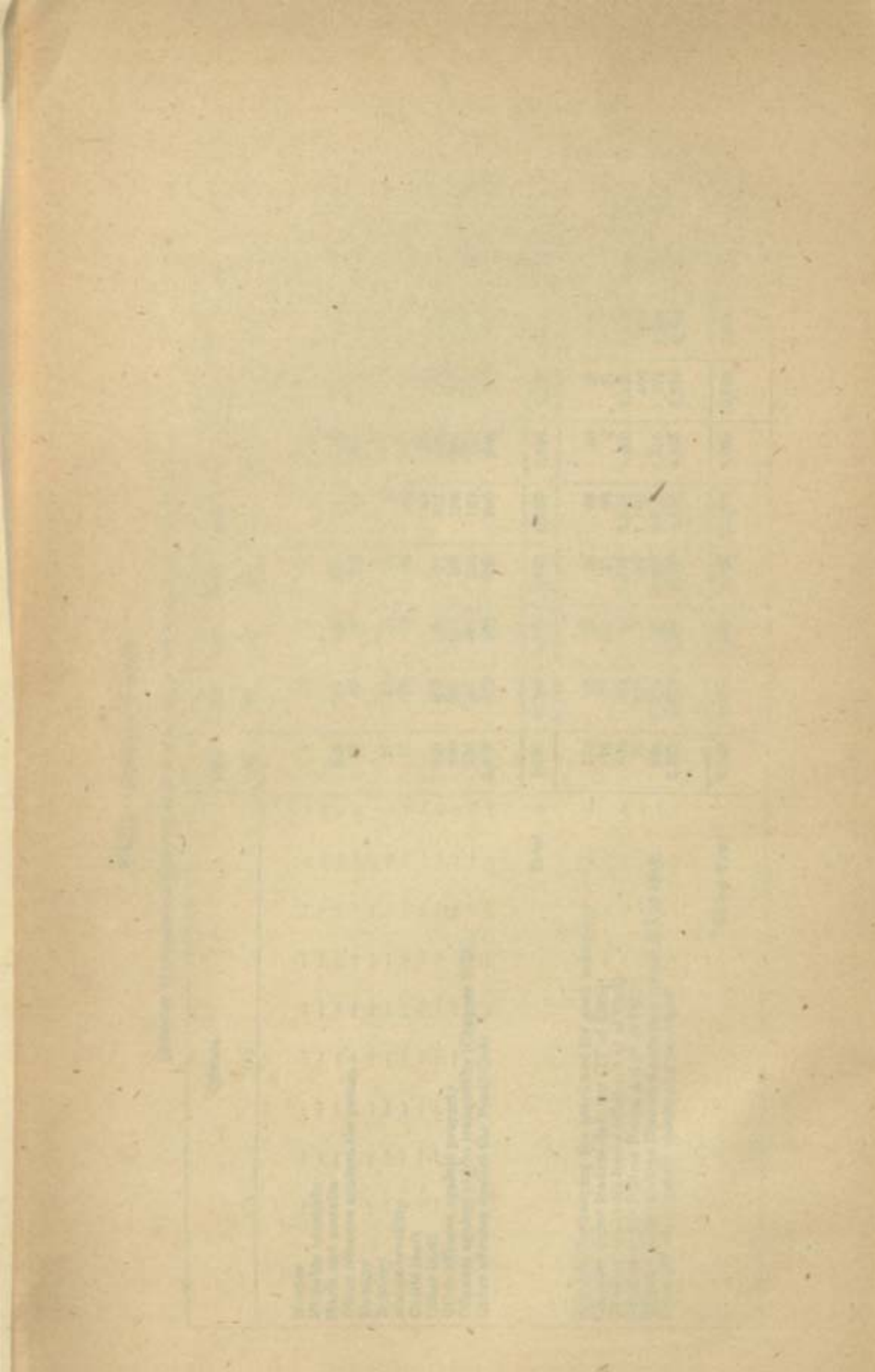
Class of Courts. (1)	Number of all original suits disposed of. (2)	Average value of suits of which value was estimable in money. *(3)	Number of appealable decrees passed in disposed of cases. (4)	Appeals preferred. (5)	Appeals decided. (6)	Decisions confirmed. (7)	Percentage of decisions confirmed to total disposals. (8)
Village Courts	3,645	Rs.
Revenue Courts	1,674	11	835	325	336	175	52.08
District Munsifs' Courts ...	15,193	168	3,890	710	660	378	57.27
Subordinate Judge's Court ...	1,840	2,265	53	11	11	7	63.63
District Judge's Court ...	46	2,861

* Based on the figures for 1908—12 only.

XXXI.—Criminal Justice.

(Number of persons convicted of certain offences in each of the ten years 1903-12.)

Offence.	(1)	(2)	(3)	(4)	(5)	(6)	(7)	(8)	(9)	(10)	(11)
	(1)	1903	1904	1905	1906	1907	1908	1909	1910	1911	1912
Murder	...	4	2	2	1	8	10	1	3	4	...
Culpable homicide	1	...
Haris and assaults	...	518	501	342	356	487	208	483	555	681	510
Other offences against the person...	...	65	22	28	19	12	209	20	20	39	34
Dacoity
Robbery	...	27	12	16	16	9	...	7
House-breaking	...	77	73	44	80	56	22	33	47	30	32
Cattle theft	30	59	36	12	15	19
Other theft	...	508	426	509	613	517	394	523	471	512	584
Other offences against property	...	280	287	604	199	238	255	331	192	311	298
Offences against public tranquility (Chapter VIII)	...	226	317	371	125	123	172	178	302	187	195
Other offences against the Penal Code	...	1,102	829	282	640	905	902	731	714	671	886
Total	...	2,897	2,349	2,198	2,055	2,385	2,240	2,346	2,321	2,461	2,585
Security for keeping the peace and for good behaviour
Offences under Madras Salt Act (IV of 1886)	...	118	89	101	95	68	50	28	43	26	93
Offences under Madras Abkari Act (I of 1886)	...	76	17	107	47	28	4	27	19	3	12
Offences under Madras Forest Act (V of 1882)	...	420	985	88	1,172	1,375	1,200	1,152	1,166	1,064	801
Offences under Madras District Municipalities Act (IV of 1894)	...	39	126	113	245	168	...	406	370	223	252
Other offences against special and local laws	...	835	1,677	1,558	2,449	2,720	1,810	1,375	1,328	717	1,208
	...	2,557	2,328	2,857	3,106	4,552	4,565	5,259	4,505	4,508	4,381
Grand Total	...	6,942	7,571	7,022	9,166	11,296	9,969	10,593	9,752	9,102	9,332



XXXII.—Work of Criminal Courts.

(Average of the statistics for the eight years 1905—12.)

Class of Courts. (1)	Number of original cases instituted. (2)	Number of appeals received. (3)
Village Magistrates	411	...
Bench	4,947	...
Special	11 *	...
" 1st class Magistrate, Bandar Fort ...	4 †	...
Stipendiary Subordinate Magistrates ...	8,700	...
Deputy, Assistant and Joint Magistrates ..	421	363
District Magistrate	15
Additional do.	4 ‡
Court of Session	38	56

* Average for three years.

† Average for six years, the other years showing nil.

‡ Of 1912, the other years showing nil.

NOTE.—The territorial limits of the district were revised in October 1904.

XXXIII.—Police and Jails in 1912.

Taluka.	Number of Police		Police Force.						Number of known-depredators.	Number of sub-jails.	Total accommodation in them.
	Stations.	Out-posts.	Inspectors.	Sub-Inspectors.	Head-stables.	Constables.	Police Tahsildars, Revenue Tahsildars.				
(1)	(2)	(3)	(4)	(5)	(6)	(7)	(8)	(9)	(10)	(11)	(12)
NARASAPUR DIVISION.											
Narasapur ...	1	1	1	2	4	29	18	1	19
Bhimavaram ...	2	3	5	33	17	1	14
Tanuku ...	5	1	...	4	12	72	29	3	30
BEZWADA DIVISION.											
Bezwada ..	4	1	1	4	13	94	86	1	38
Nandigama ...	4	1	1	4	10	63	6	...	68	2	37
Nuzvid ...	5	...	1	5	10	58	28	1	24
Tiruvur ...	2	2	...	2	8	41	19	1	12
GUDIVADA DIVISION.											
Gudivada ...	2	...	1	3	5	38	..	Not known.	25	2	16
Kaikalur ...	1	1	2	17	5	1	10
ELLORE DIVISION.											
Ellore ...	5	1	1	6	17	124	47	2	29
Yernagudem ...	8	...	2	...	9	59	24	1	12
MASULIPATAM DIVISION.											
Bandar ...	5	1	1	4	16	97	50	1	42
Divi ...	3	3	7	32	19	1	12
District Total ...	47	8	9	41	118	757	6	...	435	18	295

S Cab
2/13/27

N. C.

"A book that is shut is but a block"

CENTRAL ARCHAEOLOGICAL LIBRARY

GOVT. OF INDIA
Department of Archaeology
NEW DELHI.

Please help us to keep the book
clean and moving.

S. B. 145. N. DELHI.

See Vol. 2